

EMC TEST REPORT

For

Fulton Science and Technology Lighting Co., Ltd

LED Water proof tube light

Model No.: FLT-T8P-24L15

Additional Model No.: FLT-T8P-22L15, FLT-T8P-20L12, FLT-T8P-18L12,

FLT-T8P-15L12, FLT-T8P-12L9, FLT-T8P-10L6

Prepared for : Fulton Science and Technology Lighting Co., Ltd
Address : 7F, Building 17, Area C, Liantang Industrial Town, Shangcun
Community, Gongming, Guangming New District, Shenzhen,
Guangdong Province, China.

Prepared by : Shenzhen Southern LCS Compliance Testing Laboratory Ltd.
Address : B Area, 1-2/F, Building B, Zhongyu Green High-tech
Industrial Park, Wenge Road, Heshuikou, Gongming Street,
Guangming New District, Shenzhen, Guangdong, China

Tel : (+86)755-29871520
Fax : (+86)755-29871521
Web : www.LCS-cert.com
Mail : webmaster@LCS-cert.com

Date of receipt of test sample : January 22, 2018
Number of tested samples : 1
Serial number : Prototype
Date of Test : January 22, 2018 ~ February 06, 2018
Date of Report : February 06, 2018



EMC TEST REPORT**EN 55015: 2013+A1: 2015**


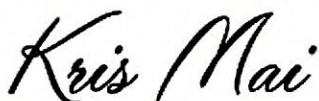
Limits and methods of measurement of radio disturbance characteristics of electrical lighting and similar equipment

EN 61547: 2009

Equipment for general lighting purposes - EMC immunity requirements

Report Reference No.: LCS180122032BE**Date Of Issue: February 06, 2018****Testing Laboratory Name.....: Shenzhen Southern LCS Compliance Testing Laboratory Ltd.****Address: B Area, 1-2/F, Building B, Zhongyu Green High-tech Industrial Park, Wenge Road, Heshuikou, Gongming Street, Guangming New District, Shenzhen, Guangdong, China****Testing Location/ Procedure ...: Full application of Harmonised standards**
Partial application of Harmonised standards
Other standard testing method **Applicant's Name: Fulton Science and Technology Lighting Co., Ltd****Address: 7F, Building 17, Area C, Liantang Industrial Town, Shangcun Community, Gongming, Guangming New District, Shenzhen, Guangdong Province, China.****Test Specification:****Standard: EN 55015: 2013+A1: 2015**
EN 61000-3-2: 2014
EN 61000-3-3: 2013
EN 61547: 2009**Test Report Form No.....: LCSEMC-1.0****TRF Originator: Shenzhen Southern LCS Compliance Testing Laboratory Ltd.****Master TRF: Dated 2016-08****Shenzhen Southern LCS Compliance Testing Laboratory Ltd. All rights reserved.**

This publication may be reproduced in whole or in part for non-commercial purposes as long as the Shenzhen Southern LCS Compliance Testing Laboratory Ltd. is acknowledged as copyright owner and source of the material. Shenzhen Southern LCS Compliance Testing Laboratory Ltd. takes no responsibility for and will not assume liability for damages resulting from the reader's interpretation of the reproduced material due to its placement and context.

Test Item Description.....: LED Water proof tube light**Trade Mark: ****Model/ Type Reference: FLT-T8P-24L15****Ratings: 220-240V AC, 50/60Hz, Max.24W, IP66, ta:45°C****Result: Positive****Compiled by:****Supervised by:****Approved by:**

Kris Mai/ File administrators

DM GU/ Technique principal

Cherry Chen/ Manager

This report shall not be reproduced except in full, without the written approval of Shenzhen Southern LCS Compliance Testing Laboratory Ltd.

EMC -- TEST REPORT

Test Report No. : LCS180122032BE	February 06, 2018 Date of issue
---	------------------------------------

Type/Model.....:	FLT-T8P-24L15
EUT.....:	LED Water proof tube light
Applicant.....:	Fulton Science and Technology Lighting Co., Ltd
Address	7F, Building 17, Area C, Liantang Industrial Town, Shangcun Community, Gongming, Guangming New District, Shenzhen, Guangdong Province, China.
Telephone.....:	/
Fax.....:	/
Manufacturer	Fulton Science and Technology Lighting Co., Ltd
Address	7F, Building 17, Area C, Liantang Industrial Town, Shangcun Community, Gongming, Guangming New District, Shenzhen, Guangdong Province, China.
Telephone.....:	/
Fax.....:	/
Factory	Fulton Science and Technology Lighting Co., Ltd
Address	7F, Building 17, Area C, Liantang Industrial Town, Shangcun Community, Gongming, Guangming New District, Shenzhen, Guangdong Province, China.
Telephone.....:	/
Fax.....:	/

Test Result according to the standards on page 8:	Positive
--	-----------------

The test report merely corresponds to the test sample.
 It is not permitted to copy extracts of these test result without the written permission of the test laboratory.

Revision History

Revision	Issue Date	Revisions	Revised By
00	February 06, 2018	Initial Issue	Cherry Chen

TABLE OF CONTENTS

Test Report Description	Page
1. SUMMARY OF STANDARDS AND RESULTS	8
1.1.Description of Standards and Results	8
1.2.Description of Performance Criteria.....	9
2. GENERAL INFORMATION	10
2.1.Description of Device (EUT).....	10
2.2.Description of Test Facility	10
2.3.Statement of the measurement uncertainty.....	10
2.4.Measurement Uncertainty	11
2.5.Model Lists.....	12
3. MEASURING DEVICES AND TEST EQUIPMENT	13
3.1.Conducted Disturbance	13
3.2.Radiated Electromagnetic Disturbance.....	13
3.3.Radiated Disturbance (Electric Field)	13
3.4.Harmonic Current.....	13
3.5.Voltage fluctuation and Flicker	13
3.6.Electrostatic Discharge	13
3.7.Electrical Fast Transient/Burst.....	13
3.8.Surge.....	14
3.9.Conducted Susceptibility	14
3.10.Power Frequency Magnetic Field Susceptibility.....	14
3.11.Voltage Dips.....	14
3.12.Voltage Short Interruptions	14
3.13.RF Field Strength Susceptibility.....	14
4. POWER LINE CONDUCTED MEASUREMENT	15
4.1.Block Diagram of Test Setup.....	15
4.2.Conducted Power Line Emission Measurement Standard and Limits.....	15
4.3.EUT Configuration on Test	15
4.4.Operating Condition of EUT	15
4.5.Test Procedure.....	16
4.6.Test Results	16
5. MAGNETIC FIELD EMISSION MEASUREMENT	18
5.1.Block Diagram of Test Setup.....	18
5.2.Magnetic Field Emission Measurement Standard and Limits.....	18
5.3.EUT Configuration on Test	18
5.4.Operating Condition of EUT	18
5.5.Test Procedure.....	19
5.6.Test Results	19
6. RADIATED EMISSION MEASUREMENT	21
6.1.Block Diagram of Test Setup.....	21

6.2.Test Standard.....	21
6.3.Radiated Emission Limits.....	21
6.4.EUT Configuration on Test	22
6.5.Operating Condition of EUT	22
6.6.Test Procedure.....	22
6.7.Test Results	22
7. HARMONIC CURRENT MEASUREMENT	24
7.1.Block Diagram of Test Setup.....	24
7.2.Test Standard.....	24
7.3.Operating Condition of EUT	24
7.4.Test Results	24
8. VOLTAGE FLUCTUATIONS & FLICKER MEASUREMENT	25
8.1.Block Diagram of Test Setup.....	25
8.2.Test Standard.....	25
8.3.Operating Condition of EUT	25
8.4.Test Results	25
9. ELECTROSTATIC DISCHARGE TEST	27
9.1.Block Diagram of Test Setup.....	27
9.2.Test Standard.....	27
9.3.Severity Levels and Performance Criterion.....	27
9.4.EUT Configuration on Test	27
9.5.Operating Condition of EUT	28
9.6.Test Procedure.....	28
9.7.Test Results	28
10. ELECTRICAL FAST TRANSIENT/BURST TEST	30
10.1.Block Diagram of Test Setup.....	30
10.2.Test Standard.....	30
10.3.Severity Levels and Performance Criterion.....	30
10.4.EUT Configuration on Test	30
10.5.Operating Condition of EUT	30
10.6.Test Procedure.....	31
10.7.Test Results	31
11. SURGE IMMUNITY TEST	33
11.1.Block Diagram of Test Setup.....	33
11.2.Test Standard.....	33
11.3.Severity Levels and Performance Criterion.....	33
11.4.EUT Configuration on Test	33
11.5.Operating Condition of EUT	34
11.6.Test Procedure.....	34
11.7.Test Results	34
12. INJECTED CURRENTS SUSCEPTIBILITY TEST	36
12.1.Block Diagram of Test Setup.....	36
12.2.Test Standard.....	36

12.3. Severity Levels and Performance Criterion.....36

12.4. EUT Configuration on Test36

12.5. Operating Condition of EUT37

12.6. Test Procedure.....37

12.7. Test Results37

13. MAGNETIC FIELD IMMUNITY TEST39

13.1. Block Diagram of Test Setup.....39

13.2. Test Standard.....39

13.3. Severity Levels and Performance Criterion.....39

13.4. EUT Configuration on Test39

13.5. Operating Condition of EUT40

13.6. Test Procedure.....40

13.7. Test Results40

14. VOLTAGE DIPS AND INTERRUPTIONS TEST42

14.1. Block Diagram of Test Setup.....42

14.2. Test Standard.....42

14.3. Severity Levels and Performance Criterion.....42

14.4. EUT Configuration on Test42

14.5. Operating Condition of EUT43

14.6. Test Procedure.....43

14.7. Test Results43

15. RF FIELD STRENGTH SUSCEPTIBILITY TEST45

15.1. Block Diagram of Test Setup.....45

15.2. Test Standard.....45

15.3. Severity Levels and Performance Criterion.....45

15.4. EUT Configuration on Test46

15.5. Operating Condition of EUT46

15.6. Test Procedure.....46

15.7. Test Results46

16. PHOTOGRAPH48

16.1. Photo of Power Line Conducted Measurement48

16.2. Photo of Radiated Electromagnetic Disturbance Measurement.....48

16.3. Photo of Radiated Measurement49

16.4. Photo of Harmonic & Flicker Measurement49

16.5. Photo of Electrostatic Discharge Test50

16.6. Photo of Electrical Fast Transient/Burst Test.....50

16.7. Photo of Surge Immunity Test.....51

16.8. Photo of Injected Currents Susceptibility Test.....51

16.9. Photo of Magnetic Field Immunity Test.....52

16.10. Photo of Voltage Dips and Short Interruptions Immunity Test52

17. EXTERNAL AND INTERNAL PHOTOS OF THE EUT.....53

1. SUMMARY OF STANDARDS AND RESULTS

1.1. Description of Standards and Results

The EUT have been tested according to the applicable standards as referenced below.

EMISSION (EN 55015: 2013+A1: 2015)			
Description of Test Item	Standard	Limits	Results
Conducted disturbance at mains terminals	EN 55015: 2013+A1: 2015	-----	PASS
Magnetic field emission	EN 55015: 2013+A1: 2015	-----	PASS
Radiated disturbance	EN 55015: 2013+A1: 2015	-----	PASS
Harmonic current emissions	EN 61000-3-2: 2014	Class C	N/A
Voltage fluctuations & flicker	EN 61000-3-3: 2013	-----	PASS
IMMUNITY (EN 61547: 2009)			
Description of Test Item	Basic Standard	Performance Criteria	Results
Electrostatic discharge (ESD)	EN 61000-4-2: 2009	B	PASS
Radio-frequency, Continuous radiated disturbance	EN 61000-4-3: 2006+A2: 2010	A	PASS
Electrical fast transient (EFT)	EN 61000-4-4: 2012	B	PASS
Surge (Input a.c. power ports)	EN 61000-4-5: 2014	B	PASS
Radio-frequency, Continuous conducted disturbance	EN 61000-4-6: 2014+A1:2015	A	PASS
Power frequency magnetic field	EN 61000-4-8: 2010	A	PASS
Voltage dips, 30% reduction	EN 61000-4-11: 2004+A1:2017	C	PASS
Voltage interruptions		B	PASS
N/A is an abbreviation for Not Applicable.			

1.2. Description of Performance Criteria

General Performance Criteria

Examples of functions defined by the manufacturer to be evaluated during testing include, but are not limited to, the following:

- essential operational modes and states;
- tests of all peripheral access (hard disks, floppy disks, printers, keyboard, mouse, etc.);
- quality of software execution;
- quality of data display and transmission;
- quality of speech transmission.

1.2.1. Performance criterion A

The equipment shall continue to operate as intended without operator intervention. No degradation of performance or loss of function is allowed below a performance level specified by the manufacture when the equipment is used as intended. The performance level may be replaced by a permissible loss of performance. If the minimum performance level or the permissible performance loss is not specified by the manufacturer, then either of these may be deliver from the product description and documentation, and by what the user may reasonably expect from the equipment if used as intended.

1.2.2. Performance criterion B

After the test, the equipment shall continue to operate as intended without operator intervention. No degradation of performance or loss of function is allowed, after the application of the phenomena below a performance level specified by the manufacture, when the equipment is used as intended. The performance level may be replaced by a permissible loss of performance.

During the test, degradation of performance is allowed. However, no change of operation state or stored data is allowed to persist after the test.


If the minimum performance level (or the permissible performance loss) is not specified by the manufacturer, then either of these may be deliver from the product description and documentation, and by what the user may reasonably expect from the equipment if used as intended.

1.2.3. Performance criterion C

Loss of function is allowed, provided the function is self-recoverable, or can be restored by the operation of the controls by the user in accordance with the manufacture's instructions. Functions, and/or information stored in non-volatile memory, or protected by a battery backup, shall not be loss.

2. GENERAL INFORMATION

2.1. Description of Device (EUT)

EUT	: LED Water proof tube light
Trade Mark	: 
Model Number	: FLT-T8P-24L15
Power Supply	: 220-240V AC, 50/60Hz, Max.24W, IP66, ta:45°C

2.2. Description of Test Facility

Site Description EMC Lab.	: TUV RH Registration Number. is UA 50362241 0001. UL Registration Number. is 100571-492. NVLAP Registration Number. is 600112-0.
Test Facilities	Shenzhen Southern LCS Compliance Testing Laboratory Ltd. B Area, 1-2/F, Building B, Zhongyu Green High-tech Industrial Park, Wenge Road, Heshuikou, Gongming Street, Guangming New District, Shenzhen, Guangdong, China
RF Field Strength Susceptibility	Shenzhen LCS Compliance Testing Laboratory Ltd. 1F., Xingyuan Industrial Park, Tongda Road, Bao'an Avenue., Bao'an District, Shenzhen, Guangdong, China

2.3. Statement of the measurement uncertainty

The data and results referenced in this document are true and accurate. The reader is cautioned that there may be errors within the calibration limits of the equipment and facilities. The measurement uncertainty was calculated for all measurements listed in this test report acc. To CISPR 16 – 4 “Specification for radio disturbance and immunity measuring apparatus and methods – Part 4: Uncertainty in EMC Measurements” and is documented in the LCS quality system acc. To DIN EN ISO/IEC 17025. Furthermore, component and process variability of devices similar to that tested may result in additional deviation. The manufacturer has the sole responsibility of continued compliance of the device.

2.4.Measurement Uncertainty

Test	Parameters	Expanded uncertainty (U_{lab})	Expanded uncertainty (U_{cisp1})
Conducted Emission	Level accuracy (9kHz to 150kHz) (150kHz to 30MHz)	± 1.40 dB ± 2.80 dB	± 4.0 dB ± 3.6 dB
Electromagnetic Radiated Emission (3-loop)	Level accuracy (9kHz to 30MHz)	± 3.46 dB	N/A
Radiated Emission	Level accuracy (9kHz to 30MHz)	± 3.12 dB	N/A
Radiated Emission	Level accuracy (30MHz to 200MHz)	± 4.66 dB	± 5.2 dB
Radiated Emission	Level accuracy (200MHz to 1000MHz)	± 4.64 dB	± 5.0 dB
Mains Harmonic	Voltage	$\pm 0.640\%$	N/A
Voltage Fluctuations & Flicker	Voltage	$\pm 0.530\%$	N/A

- (1) Where relevant, the following measurement uncertainty levels have been estimated for tests performed on the apparatus.
- (2) The reported expanded uncertainty of measurement is stated as the standard uncertainty of measurement multiplied by the coverage factor of $k=2$, which for a normal distribution corresponds to a coverage probability of approximately 95%.

2.5.Model Lists

Model	Rating
FLT-T8P-24L15	220-240V~, 50/60Hz, 24W, IP66, ta:45°C
FLT-T8P-22L15	220-240V~, 50/60Hz, 22W, IP66, ta:45°C
FLT-T8P-20L12	220-240V~, 50/60Hz, 20W, IP66, ta:45°C
FLT-T8P-18L12	220-240V~, 50/60Hz, 18W, IP66, ta:45°C
FLT-T8P-15L12	220-240V~, 50/60Hz, 15W, IP66, ta:45°C
FLT-T8P-12L9	220-240V~, 50/60Hz, 12W, IP66, ta:45°C
FLT-T8P-10L6	220-240V~, 50/60Hz, 10W, IP66, ta:45°C

3. MEASURING DEVICES AND TEST EQUIPMENT

3.1. Conducted Disturbance

Item	Test Equipment	Manufacturer	Model No.	Serial No.	Last Cal.
1	EMI Test Receiver	ROHDE & SCHWARZ	ESPI7	101940	2017-07-22
2	10dB Attenuator	SCHWARZBECK	VTSD9561-F	9561-F059	2017-07-22
3	Artificial Mains	SCHWARZBECK	NSLK8127	8127716	2017-07-22
4	EMI Test Software	EZ	EZ_EMG	N/A	2017-06-18

3.2. Radiated Electromagnetic Disturbance

Item	Test Equipment	Manufacturer	Model No.	Serial No.	Last Cal.
1	EMI Test Receiver	ROHDE & SCHWARZ	ESCI	101142	2017-07-22
2	Triple-loop Antenna	EVERFINE	LLA-2	11050003	2017-07-22
3	EMI Test Software	EZ	EZ_EMG	N/A	2017-06-18

3.3. Radiated Disturbance (Electric Field)

Item	Test Equipment	Manufacturer	Model No.	Serial No.	Last Cal.
1	3m Semi Anechoic Chamber	SIDT FRANKONIA	SAC-3M	03CH03-HY	2017-06-18
2	EMI Test Receiver	ROHDE & SCHWARZ	ESPI7	101940	2017-07-22
3	Log per Antenna	SCHWARZBECK	VULB9163	5094	2017-03-05
4	EMI Test Software	AUDIX	E3	N/A	2017-06-18
5	Positioning Controller	MF	BK8807-4A-2T	2016-0808-008	2017-06-18

3.4. Harmonic Current

Item	Test Equipment	Manufacturer	Model No.	Serial No.	Last Cal.
1	Power Analyzer Test System	Laplace	AC2000A	/	2017-07-22

3.5. Voltage fluctuation and Flicker

Item	Test Equipment	Manufacturer	Model No.	Serial No.	Last Cal.
1	Power Analyzer Test System	Laplace	AC2000A	/	2017-07-22

3.6. Electrostatic Discharge

Item	Test Equipment	Manufacturer	Model No.	Serial No.	Last Cal.
1	ESD Simulator	KIKUSUI	KC001311	KES4021	2017-07-22

3.7. Electrical Fast Transient/Burst

Item	Test Equipment	Manufacturer	Model No.	Serial No.	Last Cal.
1	Electrical fast transient(EFT)generator	HTEC	HEFT51	162201	2017-07-22
2	Coupling Clamp	3CTEST	EFTC	EC0441098	2017-06-18

3.8.Surge

Item	Test Equipment	Manufacturer	Model No.	Serial No.	Last Cal.
1	Surge test system	3CTEST	SG5006G	EC5581070	2017-07-22
2	Coupling/decoupling network	3CTEST	SGN-5010G	EC5591033	2017-07-22

3.9.Conducted Susceptibility

Item	Test Equipment	Manufacturer	Model No.	Serial No.	Last Cal.
1	Conducted Susceptibility Generator	HTEC	CDG6000	126A140012016	2017-07-22
2	CDN	HTEC	CDN-M2+3	A22/0382/2016	2017-07-22
3	Attenuator	HTEC	ATT6	HA1601	2017-07-22

3.10.Power Frequency Magnetic Field Susceptibility

Item	Test Equipment	Manufacturer	Model No.	Serial No.	Last Cal.
1	Power frequency mag-field generator System	HTEC	HPFMF100	100-2400	2017-07-22

3.11.Voltage Dips

Item	Test Equipment	Manufacturer	Model No.	Serial No.	Last Cal.
1	Voltage dips and up generator	HTEC	HPFS161P	162202	2017-07-22

3.12.Voltage Short Interruptions

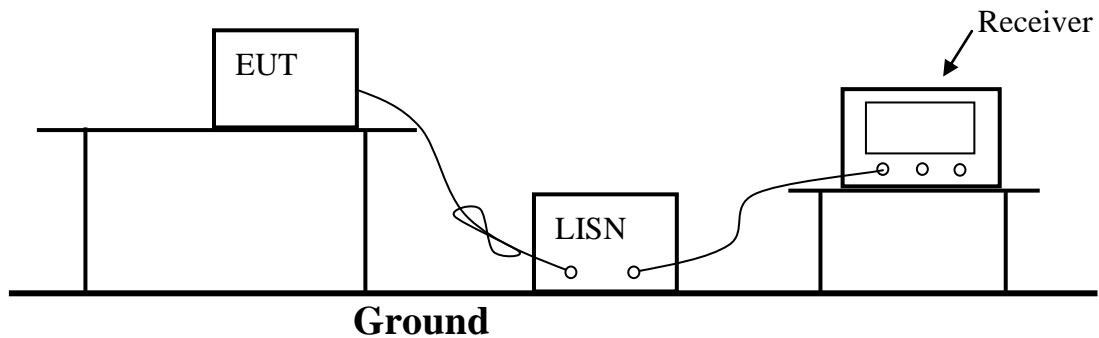
Item	Test Equipment	Manufacturer	Model No.	Serial No.	Last Cal.
1	Voltage dips and up generator	HTEC	HPFS161P	162202	2017-07-22

3.13.RF Field Strength Susceptibility

Item	Test Equipment	Manufacturer	Model No.	Serial No.	Last Cal.
1	Power Meter	R&S	NRVD	102051	2017/03/30
2	Singl Generator	R&S	SMB100A	1406600K02-104532-DF	2017/03/30
3	Biconilog Antenna	ETS.LINDGREN	3142C	00060445	2017/03/30
4	Power Amplifier	Bonn ELEktronik	BLWA0840-50/30D	066454B	2017/03/30
5	Power Amplifier	Bonn ELEktronik	BLWA0810-250/100D	066454A	2017/03/30
6	RI Test Software	R&S	EMC32	V8.40.0	N/A

4. POWER LINE CONDUCTED MEASUREMENT

4.1. Block Diagram of Test Setup



4.2. Conducted Power Line Emission Measurement Standard and Limits

4.2.1. Standard:

EN 55015: 2013+A1: 2015

4.2.2. Limits

Frequency	At mains terminals (dB μ V)	
	Quasi-peak Level	Average Level
9kHz ~ 50kHz	110	--
50kHz ~ 150kHz	90 ~ 80*	--
150kHz ~ 0.5MHz	66 ~ 56*	56 ~ 46*
0.5MHz ~ 5.0MHz	56	46
5.0MHz ~ 30MHz	60	50

1. At the transition frequency the lower limit applies.
2. * decreasing linearly with logarithm of the frequency.

4.3. EUT Configuration on Test

The configuration of the EUT is same as Section 3.1.

4.4. Operating Condition of EUT

- 4.4.1. Setup the EUT as shown in Section 4.1.
- 4.4.2. Turn on the power of all equipments.
- 4.4.3. Let the EUT work in test mode (On) and measure it.

4.5. Test Procedure

The EUT is put on the table which is 0.8 meter high above the ground and connected to the AC mains through a Line Impedance Stabilization Network (L.I.S.N.). This provided a 50ohm coupling impedance for the tested equipments. Both sides of AC line are checked to find out the maximum conducted emission according to the EN 55015 regulations during conducted emission measurement. And the voltage probe had been used for the load terminals measurement according to the EN 55015 standard.

The bandwidth of the test receiver is set at 200Hz in 9k~150kHz range and 9kHz in 150k~30MHz range.

The frequency range from 9kHz to 30MHz is checked.

All the test results are listed in Section 4.6.

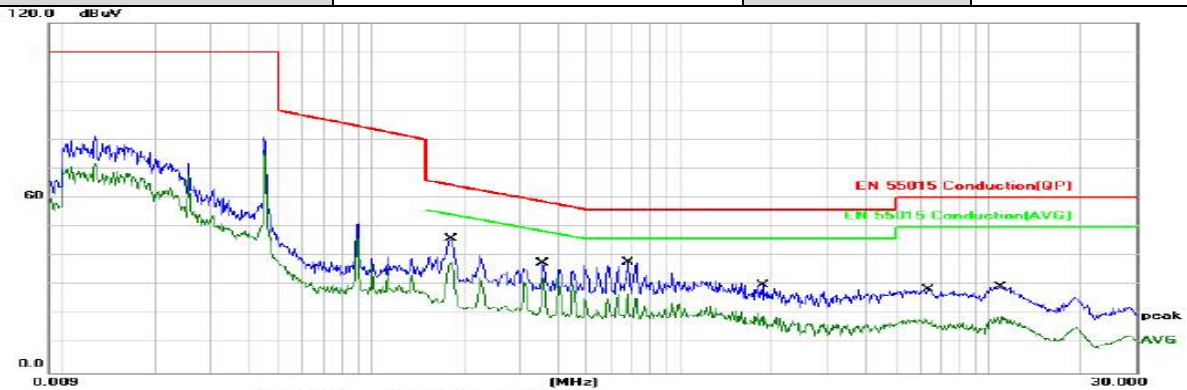
The frequency range from 9kHz to 30MHz is investigated.

4.6. Test Results

PASS.

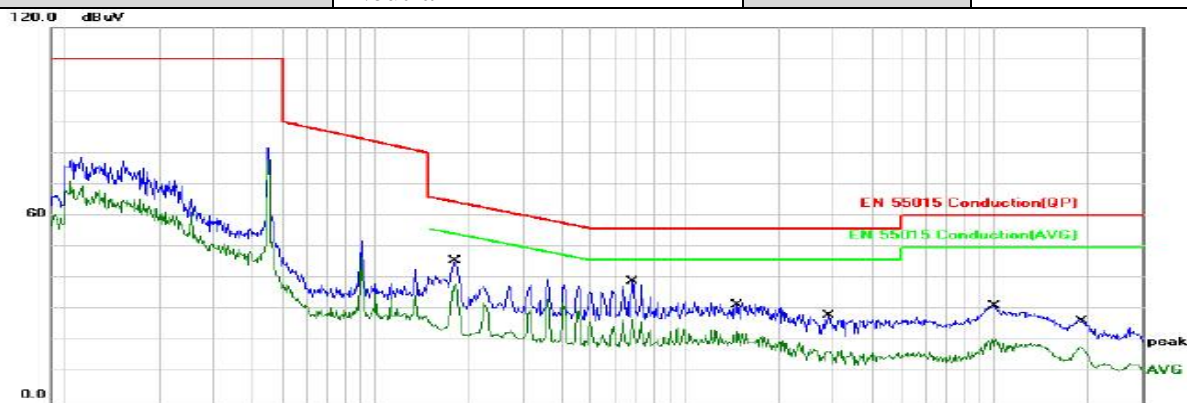
The test result please refer to the next page.

Model No.	FLT-T8P-24L15	Test Mode	ON
Environmental Conditions	24°C, 56% RH	Test Engineer	EZREAL SU
Pol	Line		



No.	Mk.	Freq. MHz	Reading Level dBuV	Correct Factor dB	Measurement dBuV	Limit dBuV	Over dB	Detector	Comment
1		0.1807	32.30	10.23	42.53	64.45	-21.92	QP	
2		0.1807	28.23	10.23	38.46	54.45	-15.99	AVG	
3		0.3590	24.89	10.20	35.09	58.75	-23.66	QP	
4	*	0.3590	23.34	10.20	33.54	48.75	-15.21	AVG	
5		0.6726	22.99	10.20	33.19	56.00	-22.81	QP	
6		0.6726	17.26	10.20	27.46	46.00	-18.54	AVG	
7		1.8416	14.70	10.20	24.90	56.00	-31.10	QP	
8		1.8416	9.29	10.20	19.49	46.00	-26.51	AVG	
9		6.3570	13.91	10.20	24.11	60.00	-35.89	QP	
10		6.3570	5.93	10.20	16.13	50.00	-33.87	AVG	
11		10.9379	14.08	10.20	24.28	60.00	-35.72	QP	
12		10.9379	7.22	10.20	17.42	50.00	-32.58	AVG	

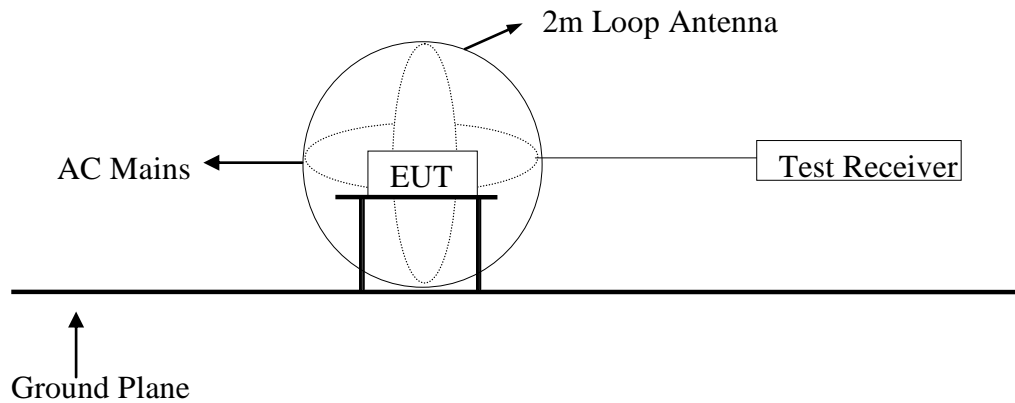
Model No.	FLT-T8P-24L15	Test Mode	ON
Environmental Conditions	24°C, 56% RH	Test Engineer	EZREAL SU
Pol	Neutral		



No.	Mk.	Freq. MHz	Reading Level dBuV	Correct Factor dB	Measurement dBuV	Limit dBuV	Over dB	Detector	Comment
1		0.1807	32.99	10.23	43.22	64.45	-21.23	QP	
2	*	0.1807	28.49	10.23	38.72	54.45	-15.73	AVG	
3		0.6793	25.35	10.20	35.55	56.00	-20.45	QP	
4		0.6793	16.87	10.20	27.07	46.00	-18.93	AVG	
5		1.4943	17.89	10.20	28.09	56.00	-27.91	QP	
6		1.4943	12.30	10.20	22.50	46.00	-23.50	AVG	
7		2.9421	13.92	10.20	24.12	56.00	-31.88	QP	
8		2.9421	6.70	10.20	16.90	46.00	-29.10	AVG	
9		10.1075	15.95	10.20	26.15	60.00	-33.85	QP	
10		10.1075	9.01	10.20	19.21	50.00	-30.79	AVG	
11		19.1169	11.77	10.20	21.97	60.00	-38.03	QP	
12		19.1169	6.77	10.20	16.97	50.00	-33.03	AVG	

5. MAGNETIC FIELD EMISSION MEASUREMENT

5.1. Block Diagram of Test Setup



5.2. Magnetic Field Emission Measurement Standard and Limits

5.2.1. Test Standard

EN 55015: 2013+A1: 2015

5.2.2. Test Limits

Frequency	Limits for loop diameter (dB μ A)
	2m
9kHz ~ 70kHz	88
70kHz ~ 150kHz	88 ~ 58*
150kHz ~ 3.0MHz	58 ~ 22*
3.0MHz ~ 30MHz	22

1. At the transition frequency the lower limit applies.
2. * decreasing linearly with logarithm of the frequency.

5.3. EUT Configuration on Test

The configuration of the EUT is same as Section 3.3.

5.4. Operating Condition of EUT

Same as conducted measurement which is listed in Section 4.4, except the test set up replaced by Section 5.1.

5.5. Test Procedure

The EUT is placed on a wood table in the center of a loop antenna. The induced current in the loop antenna is measured by means of a current probe and the test receiver. Three field components are checked by means of a coaxial switch.

The frequency range from 9kHz to 30MHz is investigated. The receiver is measured with the quasi-peak detector. For frequency band 9kHz to 150kHz, the bandwidth of the field strength meter is set at 200Hz. For frequency band 150kHz to 30MHz, the bandwidth is set at 9kHz.

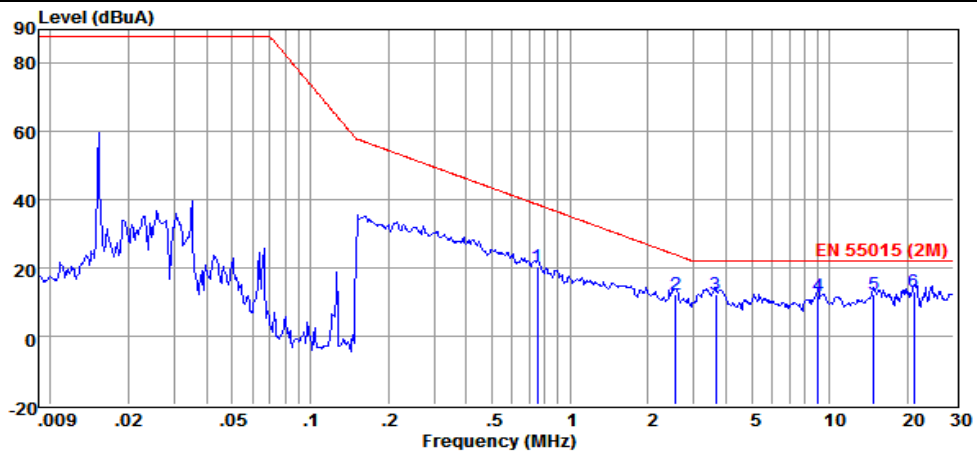
All the test results are listed in Section 5.6.

5.6. Test Results

PASS.

The frequency range from 9kHz to 30MHz is investigated.

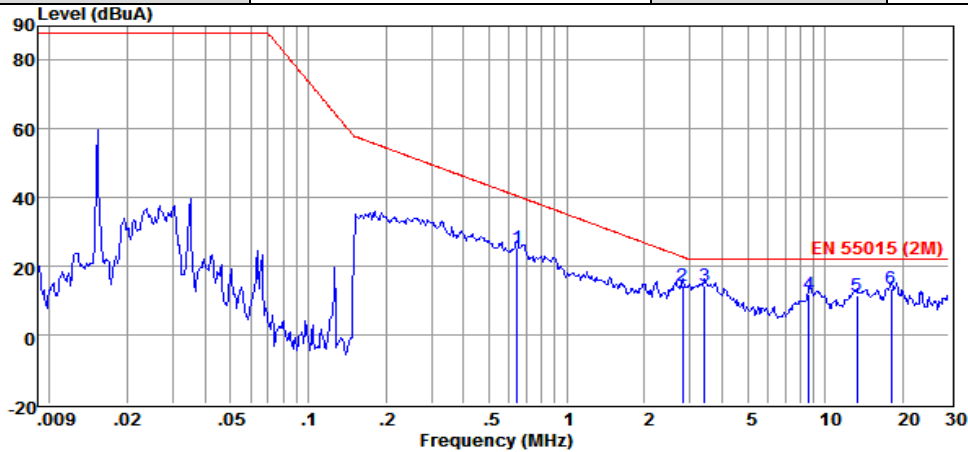
Model No.	FLT-T8P-24L15	Test Mode	ON
Environmental Conditions	24°C, 56% RH	Test Engineer	EZREAL SU
Pol	X		



	Freq	Reading	LISNFac	CabLos	Measured	Limit	Over	Remark
	MHz	dBuA	dB	dB	dBuA	dBuA	dB	
1	0.75	-40.85	60.59	0.65	20.39	38.68	-18.29	QP
2	2.55	-45.69	57.10	0.69	12.10	23.96	-11.86	QP
3	3.64	-43.44	55.04	0.71	12.31	22.00	-9.69	QP
4	9.03	-37.54	48.67	0.80	11.93	22.00	-10.07	QP
5	14.81	-36.06	47.52	0.84	12.30	22.00	-9.70	QP
6	21.17	-33.97	46.31	0.87	13.21	22.00	-8.79	QP

Remarks: 1. Measured = Reading +Cable Loss.
 2. The emission levels that are 20dB below the official limit are not reported.

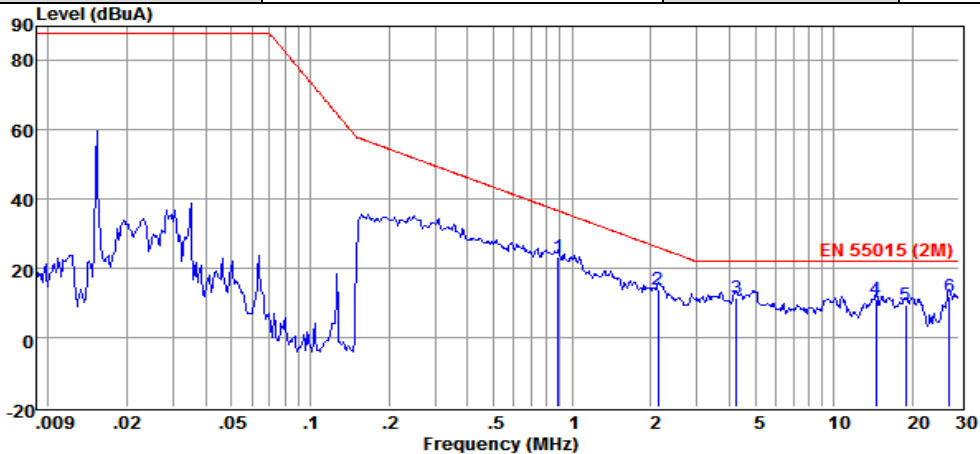
Model No.	FLT-T8P-24L15	Test Mode	ON
Environmental Conditions	24°C, 56% RH	Test Engineer	EZREAL SU
Pol	Y		



	Freq	Reading	LISNFac	CabLos	Measured	Limit	Over	Remark
	MHz	dBuA	dB	dB	dBuA	dBuA	dB	
1	0.64	-36.21	60.81	0.64	25.24	40.54	-15.30	QP
2	2.81	-42.71	56.54	0.70	14.53	22.79	-8.26	QP
3	3.41	-41.72	55.42	0.71	14.41	22.00	-7.59	QP
4	8.67	-37.84	48.82	0.79	11.77	22.00	-10.23	QP
5	13.22	-37.12	47.75	0.83	11.46	22.00	-10.54	QP
6	18.00	-34.30	46.93	0.86	13.49	22.00	-8.51	QP

Remarks: 1. Measured = Reading +Cable Loss.
 2. The emission levels that are 20dB below the official limit are not reported.

Model No.	FLT-T8P-24L15	Test Mode	ON
Environmental Conditions	24°C, 56% RH	Test Engineer	EZREAL SU
Pol	Z		

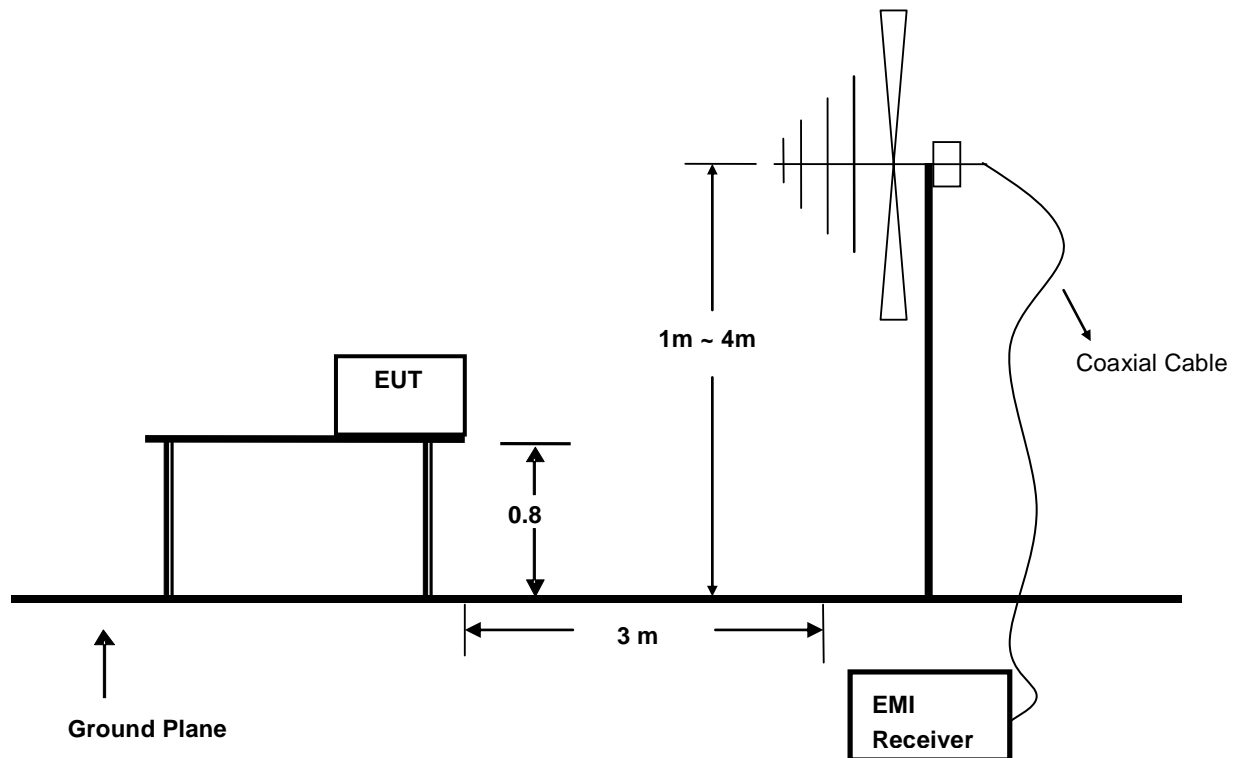


	Freq	Reading	LISNFac	CabLos	Measured	Limit	Over	Remark
	MHz	dBuA	dB	dB	dBuA	dBuA	dB	
1	0.89	-37.24	59.94	0.65	23.35	36.64	-13.29	QP
2	2.13	-44.86	58.13	0.69	13.96	26.11	-12.15	QP
3	4.25	-43.13	53.97	0.71	11.55	22.00	-10.45	QP
4	14.46	-37.38	47.57	0.84	11.03	22.00	-10.97	QP
5	18.74	-38.04	46.80	0.86	9.62	22.00	-12.38	QP
6	27.66	-34.03	44.92	0.89	11.78	22.00	-10.22	QP

Remarks: 1. Measured = Reading +Cable Loss.
 2. The emission levels that are 20dB below the official limit are not reported.

6. RADIATED EMISSION MEASUREMENT

6.1. Block Diagram of Test Setup



6.2. Test Standard

EN 55015: 2013+A1: 2015

6.3. Radiated Emission Limits

All emanations from a class B device or system, including any network of conductors and apparatus connected thereto, shall not exceed the level of field strengths specified below:

FREQUENCY (MHz)	DISTANCE (Meters)	FIELD STRENGTHS LIMIT (dB μ V/m)
30 ~ 230	3	40
230 ~ 300	3	47

Note: (1) The smaller limit shall apply at the combination point between two frequency bands.

(2) Distance refers to the distance in meters between the measuring instrument antenna and the closed point of any part of the EUT.

6.4.EUT Configuration on Test

The EN 55015 regulations test method must be used to find the maximum emission during radiated emission measurement.

6.5.Operating Condition of EUT

6.5.1 Turn on the power.

6.5.2 After that, let the EUT work in test mode (ON) and measure it.

6.6.Test Procedure

The EUT is placed on a turntable, which is 0.8 meter high above the ground. The turntable can rotate 360 degrees to determine the position of the maximum emission level. The EUT is set 3 meters away from the receiving antenna, which is mounted on an antenna tower. The antenna can be moved up and down from 1 to 4 meters to find out the maximum emission level. By-log antenna (calibrated by Dipole Antenna) is used as a receiving antenna. Both horizontal and vertical polarization of the antenna is set on test.

The bandwidth of the Receiver is set at 120kHz.

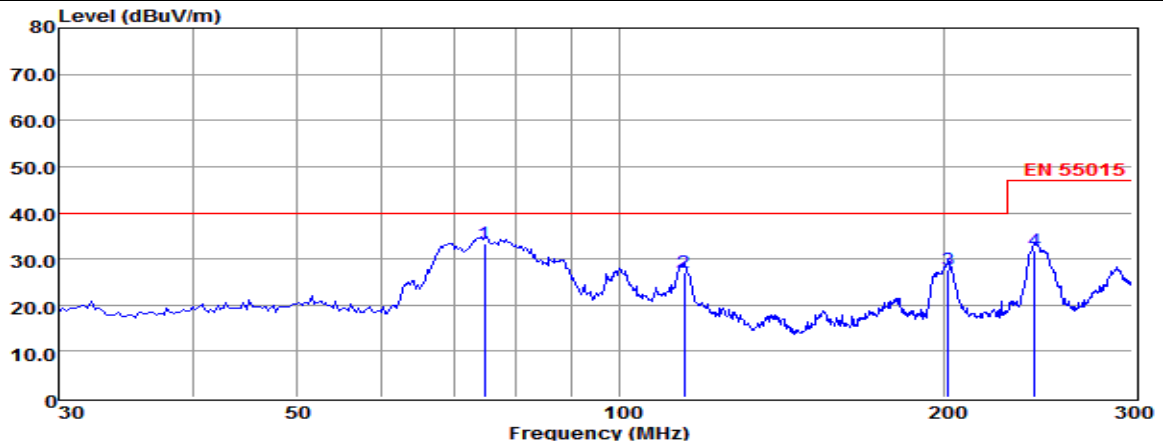
The frequency range from 30MHz to 300MHz is investigated.

6.7.Test Results

PASS.

The test result please refer to the next page.

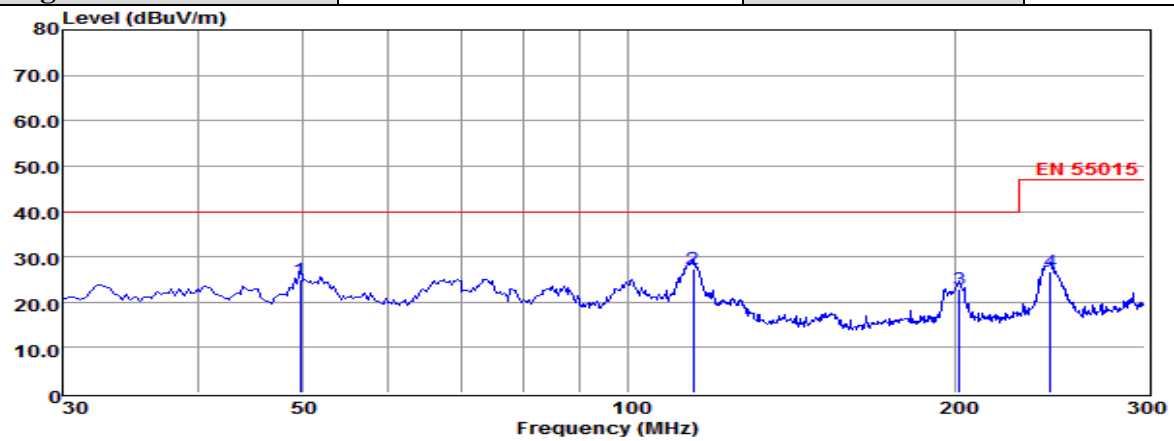
Model No.	FLT-T8P-24L15	Test Mode	ON
Environmental Conditions	24°C, 56% RH	Detector Function	Quasi-peak
Pol	Vertical	Distance	3m
Test Engineer	EZREAL SU		



	Freq MHz	Reading dBuV	CabLos dB	Antfac dB/m	Measured dBuV/m	Limit dBuV/m	Over dB	Remark
1	74.82	24.82	0.54	7.83	33.19	40.00	-6.81	QP
2	114.78	15.02	0.68	11.40	27.10	40.00	-12.90	QP
3	202.26	16.20	0.82	10.64	27.66	40.00	-12.34	QP
4	243.57	18.70	0.90	12.08	31.68	47.00	-15.32	QP

Note: 1. All readings are Quasi-peak values.
 2. Measured= Reading + Antenna Factor + Cable Loss
 3. The emission that are 20db below the official limit are not reported

Model No.	FLT-T8P-24L15	Test Mode	ON
Environmental Conditions	24°C, 56% RH	Detector Function	Quasi-peak
Pol	Horizontal	Distance	3m
Test Engineer	EZREAL SU		

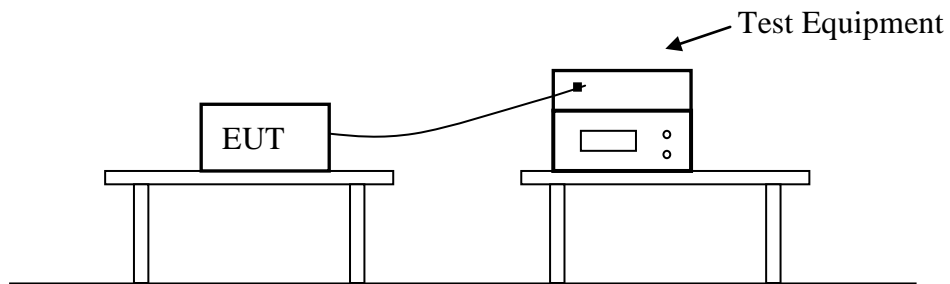


	Freq MHz	Reading dBuV	CabLos dB	Antfac dB/m	Measured dBuV/m	Limit dBuV/m	Over dB	Remark
1	49.71	11.18	0.54	13.27	24.99	40.00	-15.01	QP
2	114.78	15.31	0.68	11.40	27.39	40.00	-12.61	QP
3	202.26	11.29	0.82	10.64	22.75	40.00	-17.25	QP
4	245.46	13.80	0.97	12.08	26.85	47.00	-20.15	QP

Note: 1. All readings are Quasi-peak values.
 2. Measured= Reading + Antenna Factor + Cable Loss
 3. The emission that are 20db below the official limit are not reported

7. HARMONIC CURRENT MEASUREMENT

7.1. Block Diagram of Test Setup



7.2. Test Standard

EN 61000-3-2: 2014

7.3. Operating Condition of EUT

Same as Section 4.4, except the test setup replaced by Section 7.1.

7.4. Test Results

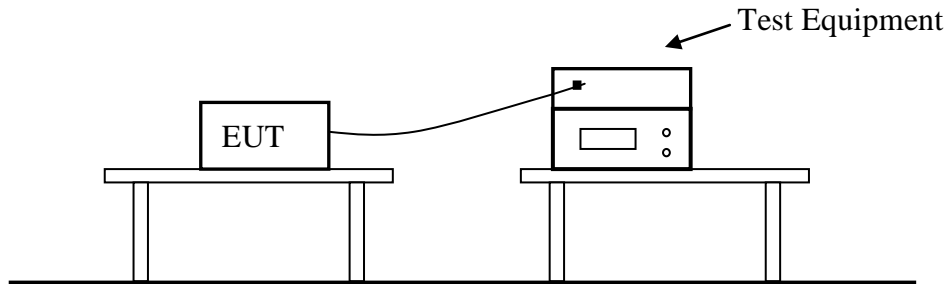
PASS.

Because power of EUT less than 25W. According standard EN 61000-3-2,

Harmonic current isn't required.

8. VOLTAGE FLUCTUATIONS & FLICKER MEASUREMENT

8.1. Block Diagram of Test Setup



8.2. Test Standard

EN 61000-3-3: 2013

8.3. Operating Condition of EUT

Same as Section 4.4, except the test setup replaced by Section 8.1.

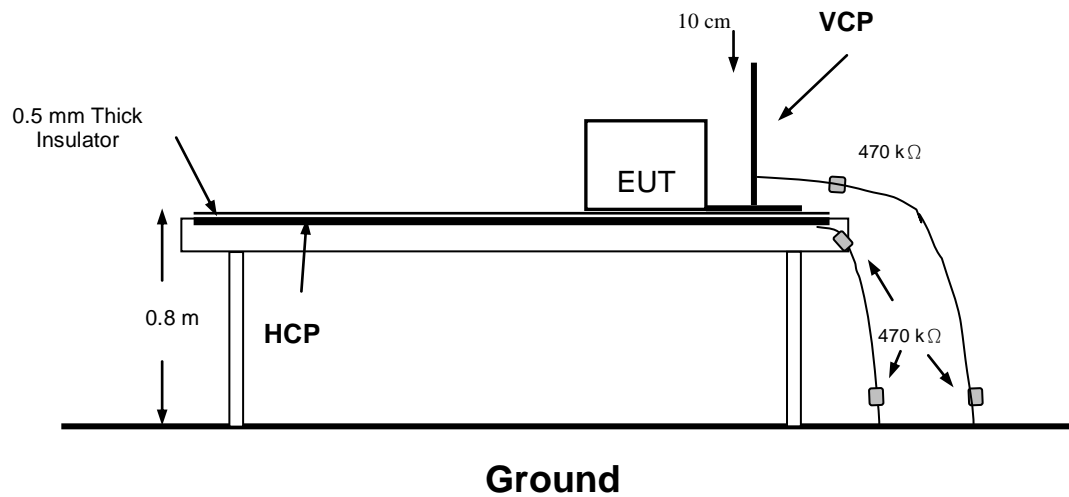
8.4. Test Results

PASS.

Model No.	FLT-T8P-24L15	Test Engineer	EZREAL SU
Load Power : 0.022 kW 0.023 kVA Power Factor 0.957 Load Current : 0.1 Arms 0.3 Apk Crest Factor 1.566			
EN 61000-3-3:2013 - Voltage reduction is positive			
Voltage Variations			
Nominal Voltage: 230 Vrms			
Highest Half-cycle level: +0.24%			
Lowest Half-cycle level: +0.46%			
d(max): 0.00% Limit: 4% PASS			
t(max): 0.00seconds Limit: 500ms PASS			
Steady State definition: >1000ms within +/- 0.2%			
Largest d(c) change down: 0.00%			
Largest d(c) change up: +0.00%			
Largest d(c) change: 0.00% Limit: 3.3% PASS			
Flicker			
Pst Classifier		Pst Calculation	
Duration	Flicker	Interval	Pst
0.1%	0.01		
0.7%	0.00		
1.0%	0.00		
1.5%	0.00		
2.2%	0.00		
3%	0.00		
4%	0.00		
6%	0.00		
8%	0.00		
10%	0.00		
13%	0.00		
17%	0.00		
30%	0.00		
50%	0.00		
80%	0.00		

9. ELECTROSTATIC DISCHARGE TEST

9.1. Block Diagram of Test Setup



9.2. Test Standard

EN 61547: 2009 (EN 61000-4-2: 2009, Severity Level: Air Discharge: Level 3, ± 8 KV
Contact Discharge: Level 2, ± 4 KV)

9.3. Severity Levels and Performance Criterion

9.3.1. Severity level

Level	Test Voltage Contact Discharge (KV)	Test Voltage Air Discharge (KV)
1.	± 2	± 2
2.	± 4	± 4
3.	± 6	± 8
4.	± 8	± 15
X	Special	Special

9.3.2. Performance criterion: **B**

9.4. EUT Configuration on Test

The configuration of EUT is listed in Section 3.6

9.5. Operating Condition of EUT

- 9.5.1. Setup the EUT as shown in Section 9.1.
- 9.5.2. Turn on the power of all equipments.
- 9.5.3. Let the EUT work in test mode (ON) and measure it.

9.6. Test Procedure

9.6.1. Air Discharge

This test is done on a non-conductive surfaces. The round discharge tip of the discharge electrode shall be approached as fast as possible to touch the EUT. After each discharge, the discharge electrode shall be removed from the EUT. The generator is then re-triggered for a new single discharge and repeated 10 times for each pre-selected test point. This procedure shall be repeated until all the air discharge completed.

Because the case of the EUT is metal surface, so it does not need to be tested.

9.6.2. Contact Discharge

All the procedure shall be same as Section 9.6.1. except that the tip of the discharge electrode shall touch the EUT before the discharge switch is operated.

9.6.3. Indirect Discharge For Horizontal Coupling Plane

At least 20 single discharges shall be applied to the horizontal coupling plane, at points on each side of the EUT. The discharge electrode positions vertically at a distance of 0.1m from the EUT and with the discharge electrode touching the coupling plane.

9.6.4. Indirect Discharge For Vertical Coupling Plane

At least 20 single discharge shall be applied to the center of one vertical edge of the coupling plane. The coupling plane, of dimensions 0.5m X 0.5m, is placed parallel to, and positioned at a distance of 0.1m from the EUT. Discharges shall be applied to the coupling plane, with this plane in sufficient different positions that the four faces of the EUT are completely illuminated.

9.7. Test Results

PASS.

Please refer to the following page.

Electrostatic Discharge Test Results

Standard	<input type="checkbox"/> IEC 61000-4-2 <input checked="" type="checkbox"/> EN 61000-4-2		
Applicant	Fulton Science and Technology Lighting Co., Ltd		
EUT	LED Water proof tube light	Temperature	23°C
M/N	FLT-T8P-24L15	Humidity	56%
Criterion	B	Pressure	1021mbar
Test Mode	ON	Test Engineer	EZREAL SU

Air Discharge

Test Points	Test Levels			Results		
	± 2KV	± 4KV	± 8KV	Pass	Fail	Performance Criterion
Front	<input checked="" type="checkbox"/>	<input checked="" type="checkbox"/>	<input checked="" type="checkbox"/>	<input checked="" type="checkbox"/>	<input type="checkbox"/>	<input type="checkbox"/> A <input checked="" type="checkbox"/> B
Back	<input checked="" type="checkbox"/>	<input checked="" type="checkbox"/>	<input checked="" type="checkbox"/>	<input checked="" type="checkbox"/>	<input type="checkbox"/>	<input type="checkbox"/> A <input checked="" type="checkbox"/> B
Left	<input checked="" type="checkbox"/>	<input checked="" type="checkbox"/>	<input checked="" type="checkbox"/>	<input checked="" type="checkbox"/>	<input type="checkbox"/>	<input type="checkbox"/> A <input checked="" type="checkbox"/> B
Right	<input checked="" type="checkbox"/>	<input checked="" type="checkbox"/>	<input checked="" type="checkbox"/>	<input checked="" type="checkbox"/>	<input type="checkbox"/>	<input type="checkbox"/> A <input checked="" type="checkbox"/> B
Top	<input checked="" type="checkbox"/>	<input checked="" type="checkbox"/>	<input checked="" type="checkbox"/>	<input checked="" type="checkbox"/>	<input type="checkbox"/>	<input type="checkbox"/> A <input checked="" type="checkbox"/> B
Bottom	<input checked="" type="checkbox"/>	<input checked="" type="checkbox"/>	<input checked="" type="checkbox"/>	<input checked="" type="checkbox"/>	<input type="checkbox"/>	<input type="checkbox"/> A <input checked="" type="checkbox"/> B

Contact Discharge

Test Points	Test Levels		Results		
	± 2 KV	±4 KV	Pass	Fail	Performance Criterion
Front	<input checked="" type="checkbox"/>	<input checked="" type="checkbox"/>	<input checked="" type="checkbox"/>	<input type="checkbox"/>	<input type="checkbox"/> A <input checked="" type="checkbox"/> B
Back	<input checked="" type="checkbox"/>	<input checked="" type="checkbox"/>	<input checked="" type="checkbox"/>	<input type="checkbox"/>	<input type="checkbox"/> A <input checked="" type="checkbox"/> B
Left	<input checked="" type="checkbox"/>	<input checked="" type="checkbox"/>	<input checked="" type="checkbox"/>	<input type="checkbox"/>	<input type="checkbox"/> A <input checked="" type="checkbox"/> B
Right	<input checked="" type="checkbox"/>	<input checked="" type="checkbox"/>	<input checked="" type="checkbox"/>	<input type="checkbox"/>	<input type="checkbox"/> A <input checked="" type="checkbox"/> B
Top	<input checked="" type="checkbox"/>	<input checked="" type="checkbox"/>	<input checked="" type="checkbox"/>	<input type="checkbox"/>	<input type="checkbox"/> A <input checked="" type="checkbox"/> B
Bottom	<input checked="" type="checkbox"/>	<input checked="" type="checkbox"/>	<input checked="" type="checkbox"/>	<input type="checkbox"/>	<input type="checkbox"/> A <input checked="" type="checkbox"/> B

Discharge To Horizontal Coupling Plane

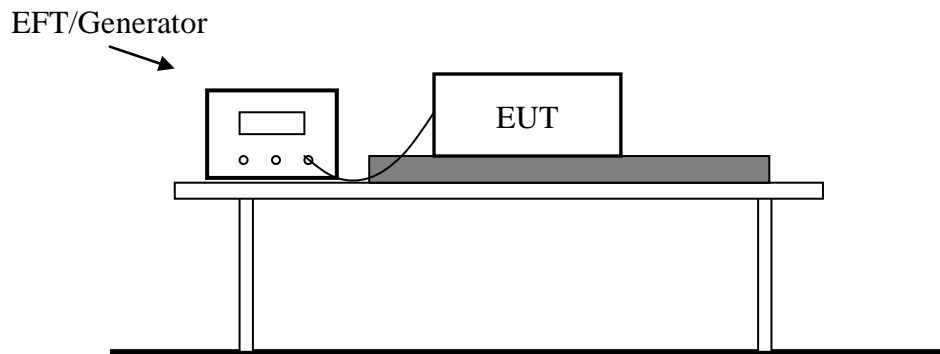
Side of EUT	Test Levels		Results		
	± 2 KV	± 4 KV	Pass	Fail	Performance Criterion
Front	<input checked="" type="checkbox"/>	<input checked="" type="checkbox"/>	<input checked="" type="checkbox"/>	<input type="checkbox"/>	<input type="checkbox"/> A <input checked="" type="checkbox"/> B
Back	<input checked="" type="checkbox"/>	<input checked="" type="checkbox"/>	<input checked="" type="checkbox"/>	<input type="checkbox"/>	<input type="checkbox"/> A <input checked="" type="checkbox"/> B
Left	<input checked="" type="checkbox"/>	<input checked="" type="checkbox"/>	<input checked="" type="checkbox"/>	<input type="checkbox"/>	<input type="checkbox"/> A <input checked="" type="checkbox"/> B
Right	<input checked="" type="checkbox"/>	<input checked="" type="checkbox"/>	<input checked="" type="checkbox"/>	<input type="checkbox"/>	<input type="checkbox"/> A <input checked="" type="checkbox"/> B

Discharge To Vertical Coupling Plane

Side of EUT	Test Levels		Results		
	± 2 KV	± 4 KV	Pass	Fail	Performance Criterion
Front	<input checked="" type="checkbox"/>	<input checked="" type="checkbox"/>	<input checked="" type="checkbox"/>	<input type="checkbox"/>	<input type="checkbox"/> A <input checked="" type="checkbox"/> B
Back	<input checked="" type="checkbox"/>	<input checked="" type="checkbox"/>	<input checked="" type="checkbox"/>	<input type="checkbox"/>	<input type="checkbox"/> A <input checked="" type="checkbox"/> B
Left	<input checked="" type="checkbox"/>	<input checked="" type="checkbox"/>	<input checked="" type="checkbox"/>	<input type="checkbox"/>	<input type="checkbox"/> A <input checked="" type="checkbox"/> B
Right	<input checked="" type="checkbox"/>	<input checked="" type="checkbox"/>	<input checked="" type="checkbox"/>	<input type="checkbox"/>	<input type="checkbox"/> A <input checked="" type="checkbox"/> B

10. ELECTRICAL FAST TRANSIENT/BURST TEST

10.1. Block Diagram of Test Setup



10.2. Test Standard

EN 61547: 2009 (EN 61000-4-4: 2012, Severity Level: Level 2: 1KV)

10.3. Severity Levels and Performance Criterion

10.3.1. Severity level

Open Circuit Output Test Voltage $\pm 10\%$		
Level	On Power Supply Lines	On I/O (Input/Output) Signal data and control lines
1.	0.5 KV	0.25 KV
2.	1 KV	0.5 KV
3.	2 KV	1 KV
4.	4 KV	2 KV
X	Special	Special

10.3.2. Performance criterion: **B**

10.4. EUT Configuration on Test

The configuration of EUT are listed in Section 3.7.

10.5. Operating Condition of EUT

10.5.1. Setup the EUT as shown in Section 10.1.

10.5.2. Turn on the power of all equipments.

10.5.3. Let the EUT work in test mode (ON) and measure it.

10.6. Test Procedure

The EUT is put on the table which is 0.8 meter high above the ground. This reference ground plane shall project beyond the EUT by at least 0.1m on all sides and the minimum distance between EUT and all other conductive structure, except the ground plane beneath the EUT, shall be more than 0.5m.

10.6.1. For input and output AC power ports:

The EUT is connected to the power mains by using a coupling device which couples the EFT interference signal to AC power lines. Both polarities of the test voltage should be applied during compliance test and the duration of the test is 2 mins.

10.6.2. For signal lines and control lines ports:

No I/O ports. It's unnecessary to test.

10.6.3. For DC output line ports:

It's unnecessary to test.

10.7. Test Results

PASS.

Please refer to the following page.

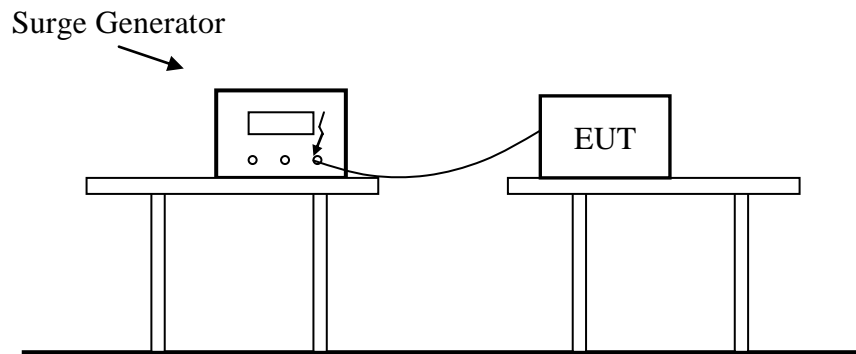
Electrical Fast Transient/Burst Test Results

Standard	<input type="checkbox"/> IEC 61000-4-4 <input checked="" type="checkbox"/> EN 61000-4-4		
Applicant	Fulton Science and Technology Lighting Co., Ltd		
EUT	LED Water proof tube light	Temperature	23°C
M/N	FLT-T8P-24L15	Humidity	56%
Test Mode	ON	Criterion	B
Test Engineer	EZREAL SU		

Line	Test Voltage	Result (+)	Result (-)
L	1KV	PASS	PASS
N	1KV	PASS	PASS
PE			
L-N	1KV	PASS	PASS
L-PE			
N-PE			
L-N-PE			
Signal Line			
I/O Cable			
Note:			

11. SURGE IMMUNITY TEST

11.1. Block Diagram of Test Setup



11.2. Test Standard

EN 61547: 2009 (EN 61000-4-5: 2014, Severity Level: Line to Line: Level 1, 0.5KV)

11.3. Severity Levels and Performance Criterion

11.3.1. Severity level

Severity Level	Open-Circuit Test Voltage (KV)
1	0.5
2	1.0
3	2.0
4	4.0
*	Special

11.3.2. Performance criterion: **B**

11.4. EUT Configuration on Test

The configuration of EUT are listed in Section 3.8

11.5. Operating Condition of EUT

- 11.5.1. Setup the EUT as shown in Section 11.1.
- 11.5.2. Turn on the power of all equipments.
- 11.5.3. Let the EUT work in test mode (ON) and measure it.

11.6. Test Procedure

- 11.6.1. Set up the EUT and test generator as shown on Section 11.1.
- 11.6.2. For line to line coupling mode, provide a 1.0KV 1.2/50us voltage surge (at open-circuit condition) and 8/20us current surge to EUT selected points.
- 11.6.3. For line to earth coupling mode, provide a 2.0KV 1.2/50us voltage surge (at open-circuit condition) and 8/20us current surge to EUT selected points.
- 11.6.4. At least 5 positive and 5 negative (polarity) tests with a maximum 1/min repetition rate are conducted during test.
- 11.6.5. Different phase angles are done individually.
- 11.6.6. Record the EUT operating situation during compliance test and decide the EUT immunity criterion for above each test.

11.7. Test Results

PASS.

Please refer to the following page.

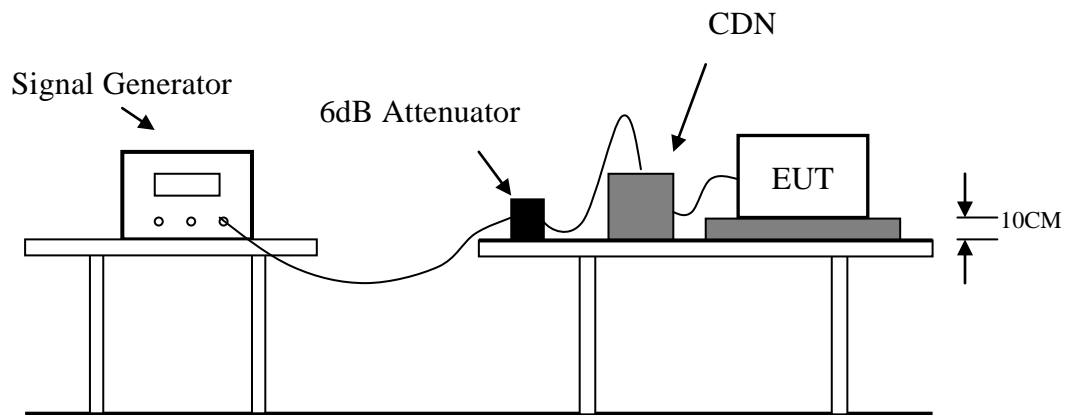
Surge Immunity Test Result

Standard	<input type="checkbox"/> IEC 61000-4-5 <input checked="" type="checkbox"/> EN 61000-4-5		
Applicant	Fulton Science and Technology Lighting Co., Ltd		
EUT	LED Water proof tube light	Temperature	23℃
M/N	FLT-T8P-24L15	Humidity	56%
Test Mode	ON	Criterion	B
Test Engineer	EZREAL SU		

Location	Polarity	Phase Angle	Number of Pulse	Pulse Voltage (KV)	Result
L-N	+	0°	5	--	--
	+	90°	5	0.5	PASS
	+	180°	5	--	--
	+	270°	5	0.5	PASS
	-	0°	5	--	--
	-	90°	5	0.5	PASS
	-	180°	5	--	--
	-	270°	5	0.5	PASS
L-PE	+	0°	5		
	+	90°	5		
	+	180°	5		
	+	270°	5		
	-	0°	5		
	-	90°	5		
	-	180°	5		
	-	270°	5		
N-PE	+	0°	5		
	+	90°	5		
	+	180°	5		
	+	270°	5		
	-	0°	5		
	-	90°	5		
	-	180°	5		
	-	270°	5		
Signal Line					
Note					

12. INJECTED CURRENTS SUSCEPTIBILITY TEST

12.1. Block Diagram of Test Setup



12.2. Test Standard

EN 61547: 2009 (EN 61000-4-6: 2014+A1:2015, Severity Level: 3V (rms), 0.15MHz ~ 80MHz)

12.3. Severity Levels and Performance Criterion

12.3.1. Severity level

Level	Field Strength (V)
1.	1
2.	3
3.	10
X	Special

12.3.2. Performance criterion: A

12.4. EUT Configuration on Test

The configuration of EUT are listed in Section 3.9.

12.5. Operating Condition of EUT

- 12.5.1. Setup the EUT as shown in Section 12.1.
- 12.5.2. Turn on the power of all equipments.
- 12.5.3. Let the EUT work in test mode (ON) and measure it.

12.6. Test Procedure

- 12.6.1. Set up the EUT, CDN and test generators as shown on Section 12.1.
- 12.6.2. Let the EUT work in test mode and measure it.
- 12.6.3. The EUT are placed on an insulating support 0.1m high above a ground reference plane. CDN (coupling and decoupling device) is placed on the ground plane about 0.3m from EUT. Cables between CDN and EUT are as short as possible, and their height above the ground reference plane shall be between 30 and 50 mm (where possible).
- 12.6.4. The disturbance signal described below is injected to EUT through CDN.
- 12.6.5. The EUT operates within its operational mode(s) under intended climatic conditions after power on.
- 12.6.6. The frequency range is swept from 150kHz to 80MHz using 3V signal level, and with the disturbance signal 80% amplitude modulated with a 1kHz sine wave.
- 12.6.7. The rate of sweep shall not exceed 1.5×10^{-3} decades/s. Where the frequency is swept incrementally, the step size shall not exceed 1% of the start and thereafter 1% of the preceding frequency value.
- 12.6.8. Recording the EUT operating situation during compliance testing and decide the EUT immunity criterion.

12.7. Test Results

PASS.

Please refer to the following page.

Injected Currents Susceptibility Test Results

Standard	<input type="checkbox"/> IEC 61000-4-6 <input checked="" type="checkbox"/> EN 61000-4-6		
Applicant	Fulton Science and Technology Lighting Co., Ltd		
EUT	LED Water proof tube light	Temperature	23°C
M/N	FLT-T8P-24L15	Humidity	56%
Test Mode	ON	Criterion	A
Test Engineer	EZREAL SU		

Frequency Range (MHz)	Injected Position	Strength (Unmodulated)	Criterion	Result
0.15 ~ 80	AC Mains	3V	A	PASS

Remark:

1. Modulation Signal: 1kHz 80% AM

2. Measurement Equipment:

Simulator: CIT-10 (FRANKONIA)

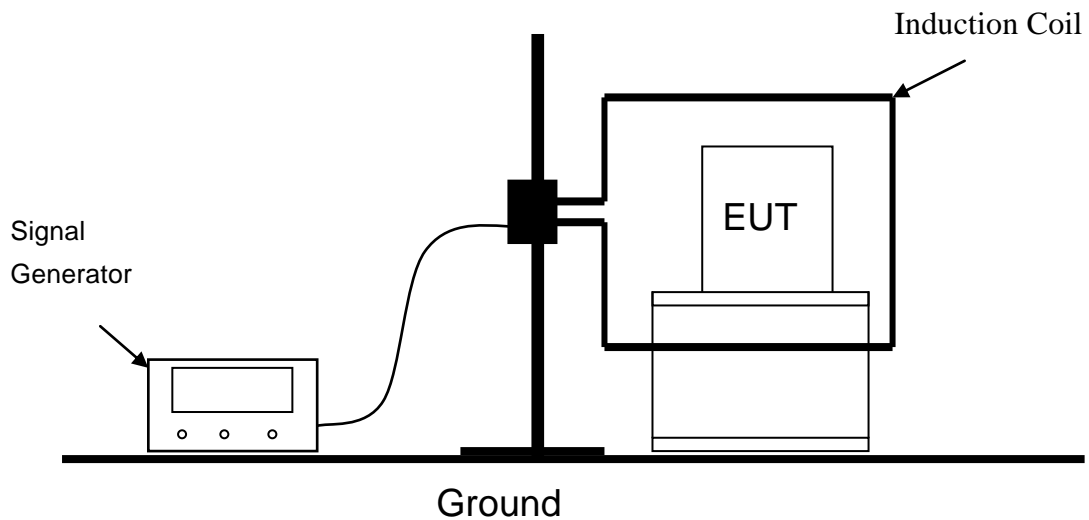
CDN : CDN-M2 (FRANKONIA)

CDN-M3 (FRANKONIA)

Note:

13. MAGNETIC FIELD IMMUNITY TEST

13.1. Block Diagram of Test Setup



13.2. Test Standard

EN 61547: 2009 (EN 61000-4-8: 2010, Severity Level 2: 3A/m)

13.3. Severity Levels and Performance Criterion

13.3.1. Severity level

Level	Magnetic Field Strength (A/m)
1.	1
2.	3
3.	10
4.	30
5.	100
X	Special

13.3.2. Performance criterion: A

13.4. EUT Configuration on Test

The configuration of EUT are listed in Section 3.10.

13.5. Operating Condition of EUT

- 13.5.1. Setup the EUT as shown in Section 13.1.
- 13.5.2. Turn on the power of all equipments.
- 13.5.3. Let the EUT work in test mode (On) and measure it.

13.6. Test Procedure

- 13.6.1. Set up the EUT system as shown on Section 13.1.
- 13.6.2. The Induction coil is set up in horizontal or vertical.
- 13.6.3. Let the EUT work in test mode and measure it.

13.7. Test Results

PASS.

Please refer to the following page.

Magnetic Field Immunity Test Result

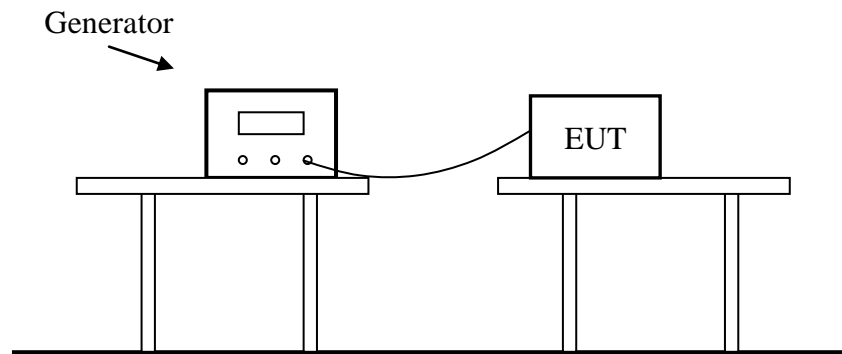
Standard	<input type="checkbox"/> IEC 61000-4-8 <input checked="" type="checkbox"/> EN 61000-4-8		
Applicant	Fulton Science and Technology Lighting Co., Ltd		
EUT	LED Water proof tube light	Temperature	23°C
M/N	FLT-T8P-24L15	Humidity	56%
Test Mode	ON	Criterion	A
Test Engineer	EZREAL SU		

Test Level (A/M)	Testing Duration	Coil Orientation	Criterion	Result
3	5 mins	X	A	PASS
3	5 mins	Y	A	PASS
3	5 mins	Z	A	PASS

Note:

14. VOLTAGE DIPS AND INTERRUPTIONS TEST

14.1. Block Diagram of Test Setup



14.2. Test Standard

EN 61547: 2009 (EN 61000-4-11: 2004+A1:2017)

14.3. Severity Levels and Performance Criterion

14.3.1. Severity level

Test Level (% U _T)	Voltage dip and short interruptions (% U _T)	Duration (in period)
0	100	0.5
70	30	10

14.3.2. Performance criterion: **B&C**

14.4. EUT Configuration on Test

The configuration of EUT are listed in Section 3.11&3.12.

14.5. Operating Condition of EUT

- 14.5.1. Setup the EUT as shown in Section 14.1.
- 14.5.2. Turn on the power of all equipments.
- 14.5.3. Let the EUT work in test mode (ON) and measure it.

14.6. Test Procedure

- 14.6.1. Set up the EUT and test generator as shown on Section 14.1.
- 14.6.2. The interruptions is introduced at selected phase angles with specified duration.
- 14.6.3. Record any degradation of performance.

14.7. Test Results

PASS.

Please refer to the following page.

Voltage Dips And Interruptions Test Results

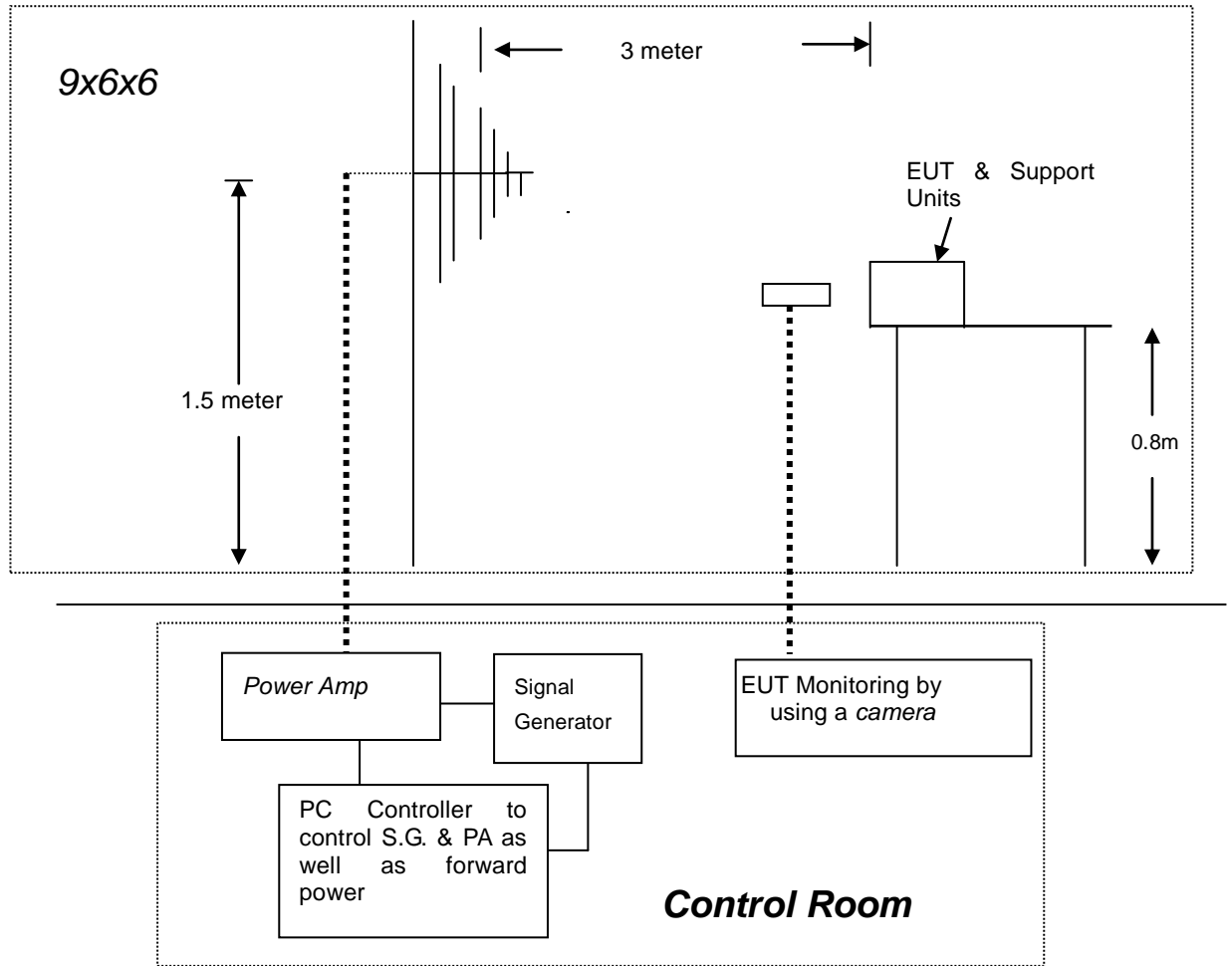
Standard	<input type="checkbox"/> IEC 61000-4-11 <input checked="" type="checkbox"/> EN 61000-4-11		
Applicant	Fulton Science and Technology Lighting Co., Ltd		
EUT	LED Water proof tube light	Temperature	23°C
M/N	FLT-T8P-24L15	Humidity	56%
Test Mode	ON	Criterion	B&C
Test Engineer	EZREAL SU		

Test Level % U _T	Voltage Dips & Short Interruptions % U _T	Duration (in periods)	Criterion	Result
0	100	0.5P	B	PASS
70	30	10P	C	PASS

Note:

15. RF FIELD STRENGTH SUSCEPTIBILITY TEST

15.1. Block Diagram of Test Setup



15.2. Test Standard

EN 61547: 2009 (EN 61000-4-3: 2006+A2: 2010, Severity Level: 2, 3V / m)

15.3. Severity Levels and Performance Criterion

15.3.1. Severity level

Level	Field Strength (V/m)
1	1
2	3
3	10
X	Special

15.3.2. Performance criterion: A

15.4.EUT Configuration on Test

The configuration of EUT are listed in Section 3.13.

15.5.Operating Condition of EUT

15.5.1.Setup the EUT as shown in Section 15.1.

15.5.2.Turn on the power of all equipments.

15.5.3.Let the EUT work in test mode (On) and measure it.

15.6.Test Procedure

The EUT and its simulators are placed on a turn table which is 0.8 meter above ground. EUT is set 3 meter away from the transmitting antenna which is mounted on an antenna tower. Both horizontal and vertical polarization of the antenna are set on test. Each of the four sides of EUT must be faced this transmitting antenna and measured individually. In order to judge the EUT performance, a CCD camera is used to monitor EUT screen. All the scanning conditions are as follows:

Condition of Test	Remarks
1. Fielded Strength	3 V/m (Severity Level 2)
2. Radiated Signal	Unmodulated
3. Scanning Frequency	80 - 1000 MHz
4. Dwell time of radiated	0.0015 decade/s
5. Waiting Time	3 Sec.

15.7.Test Results

PASS.

Please refer to the following page.

RF Field Strength Susceptibility Test Results

Standard	<input type="checkbox"/> IEC 61000-4-3 <input checked="" type="checkbox"/> EN 61000-4-3		
Applicant	Fulton Science and Technology Lighting Co., Ltd		
EUT	LED Water proof tube light	Temperature	26°C
M/N	FLT-T8P-24L15	Humidity	51%
Field Strength	3 V/m	Criterion	A
Test Mode	ON	Test Engineer	EZREAL SU
Frequency Range	80 MHz to 1000 MHz		
Modulation	<input type="checkbox"/> None <input type="checkbox"/> Pulse <input checked="" type="checkbox"/> AM 1KHz 80%		
Steps	1%		

	Horizontal	Vertical
Front	PASS	PASS
Right	PASS	PASS
Rear	PASS	PASS
Left	PASS	PASS

Test Equipment:

1. Signal Generator: 2031 (MARCONI)
2. Power Amplifier: 500A100 & 100W/1000M1 (A&R)
3. Power Antenna: 3108 (EMCO) & AT1080 (A&R)
4. Field Monitor: FM2000 (A&R)

Note:

16. PHOTOGRAPH

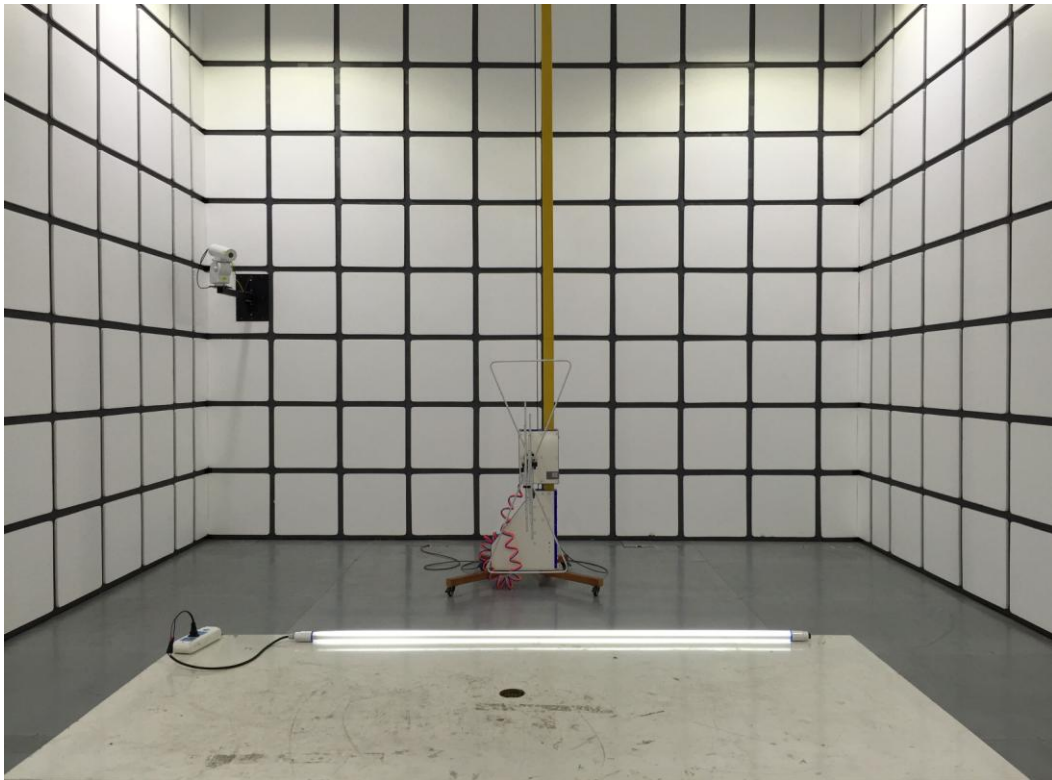
16.1. Photo of Power Line Conducted Measurement



16.2. Photo of Radiated Electromagnetic Disturbance Measurement



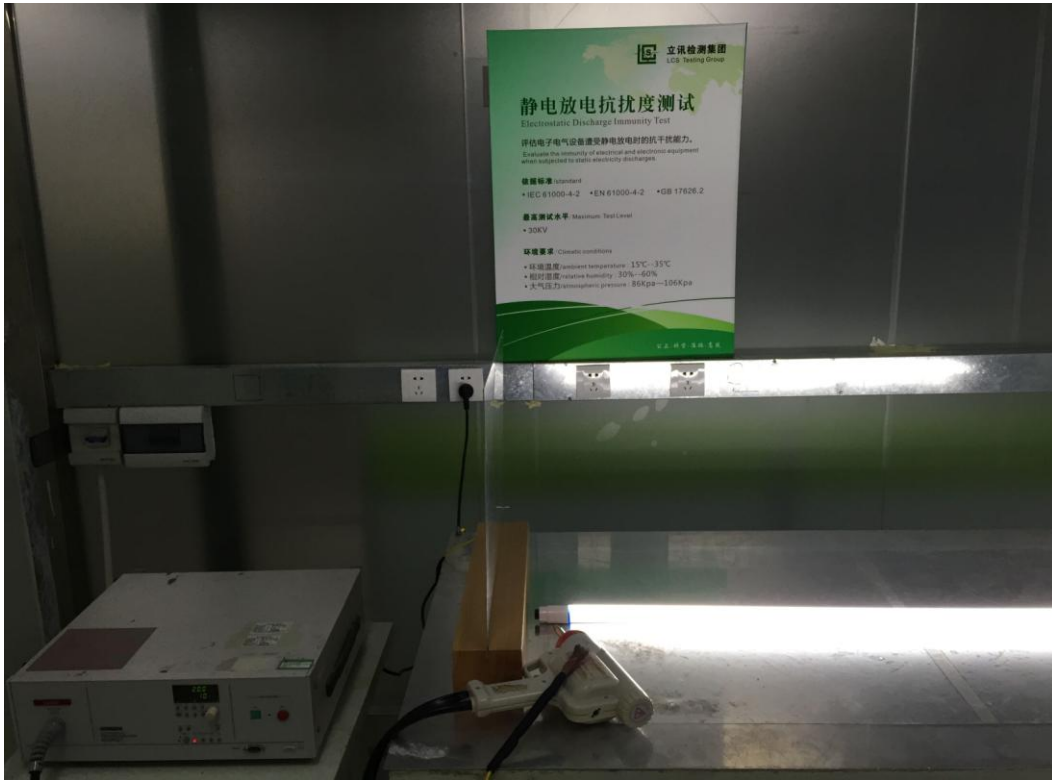
16.3. Photo of Radiated Measurement



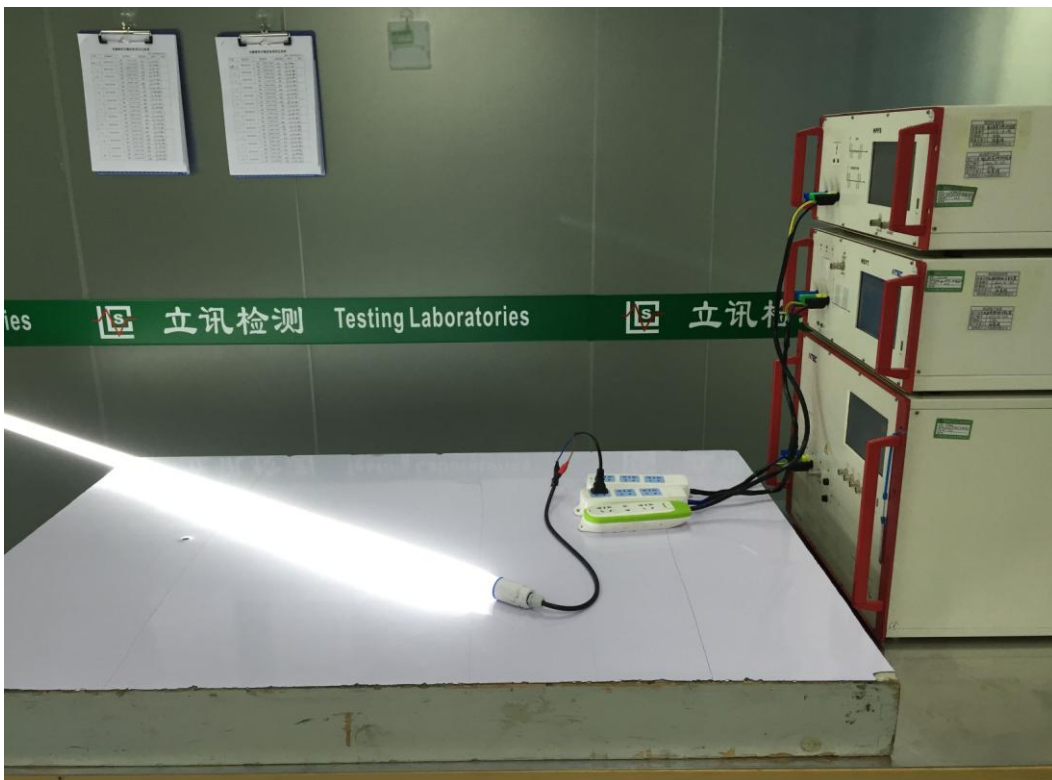
16.4. Photo of Harmonic & Flicker Measurement



16.5. Photo of Electrostatic Discharge Test



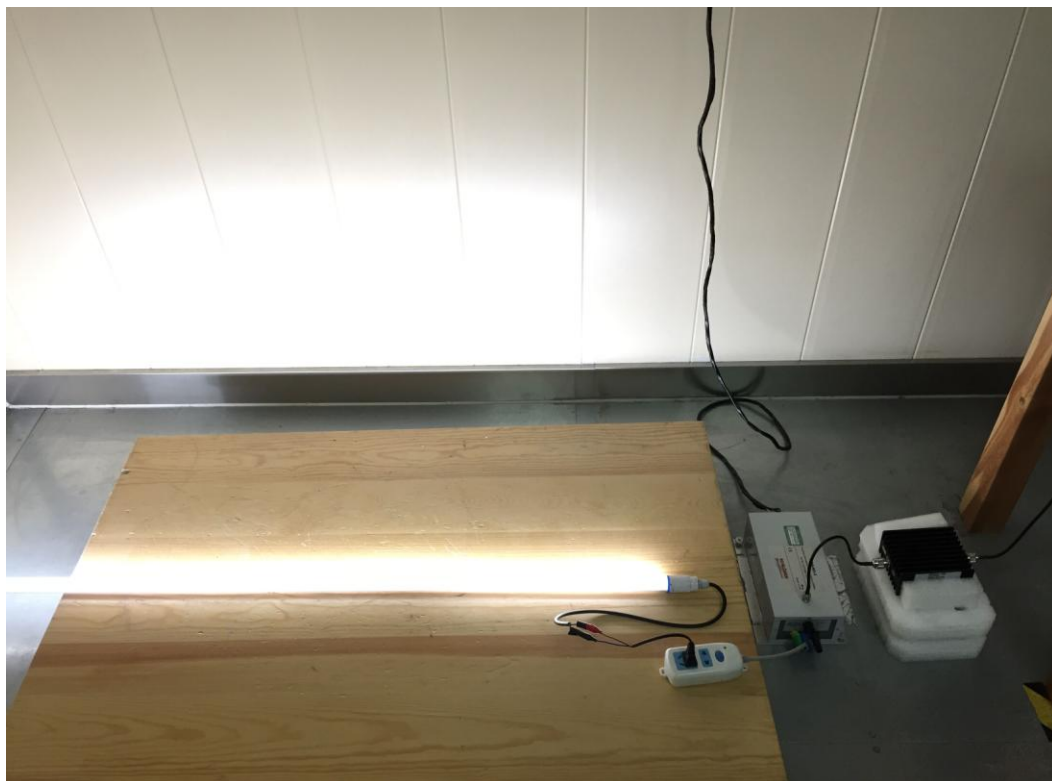
16.6. Photo of Electrical Fast Transient/Burst Test



16.7. Photo of Surge Immunity Test



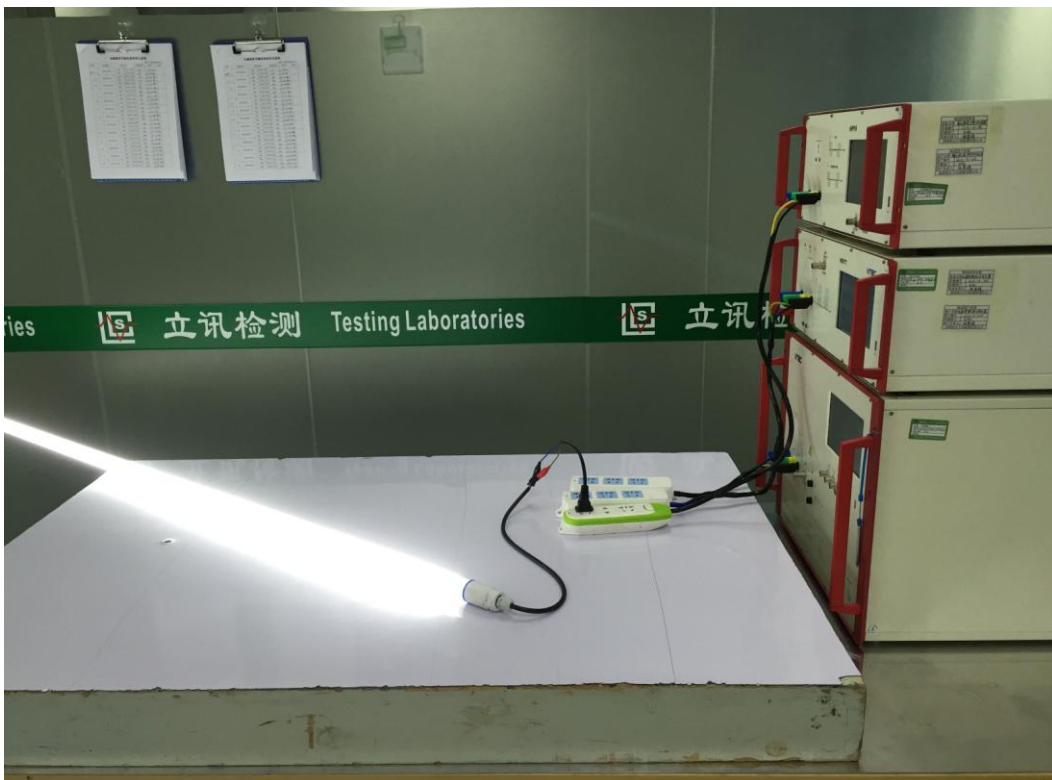
16.8. Photo of Injected Currents Susceptibility Test



16.9. Photo of Magnetic Field Immunity Test



16.10. Photo of Voltage Dips and Short Interruptions Immunity Test



17. EXTERNAL AND INTERNAL PHOTOS OF THE EUT

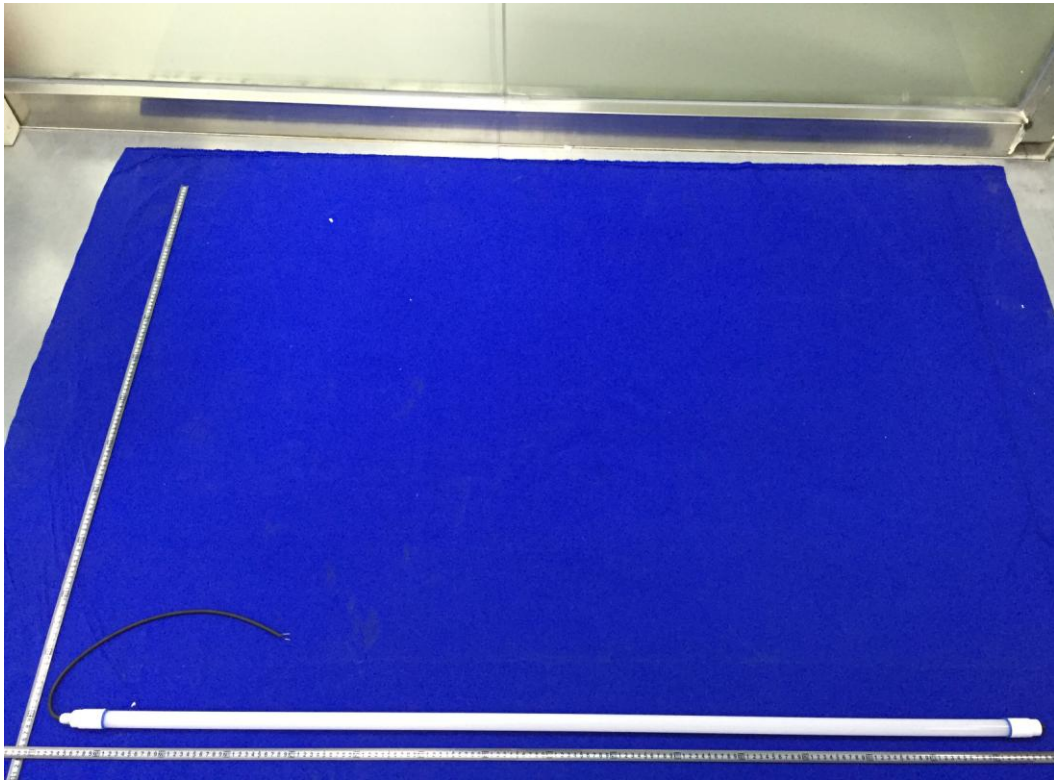


Fig. 1

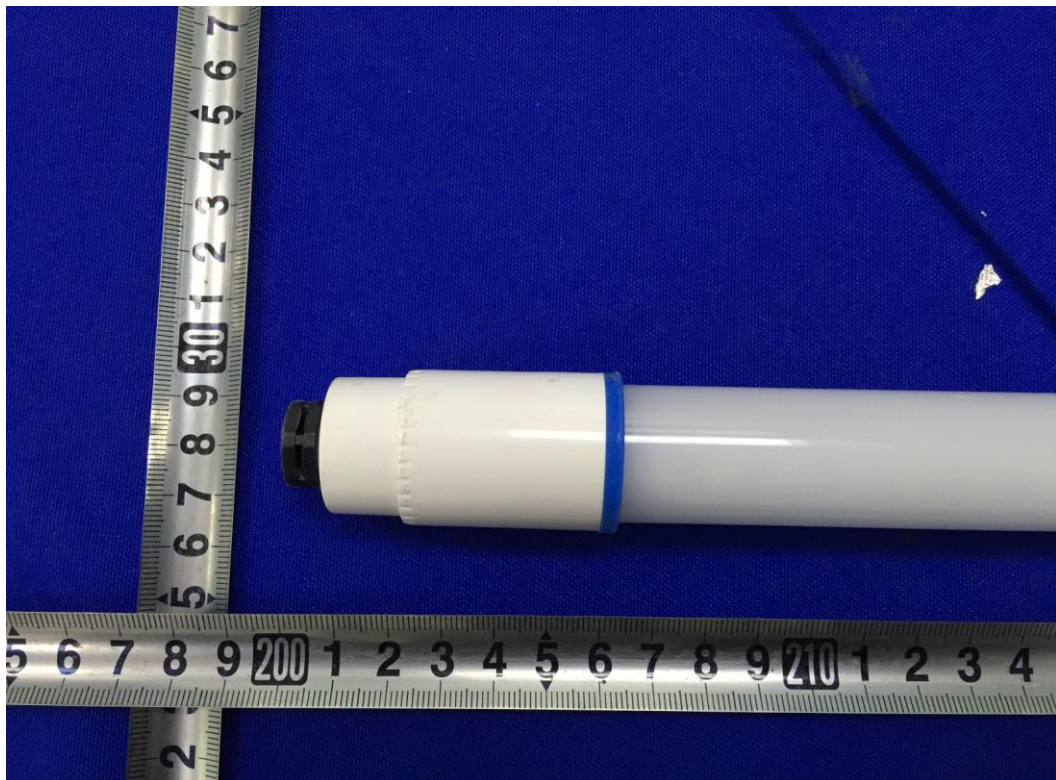


Fig. 2

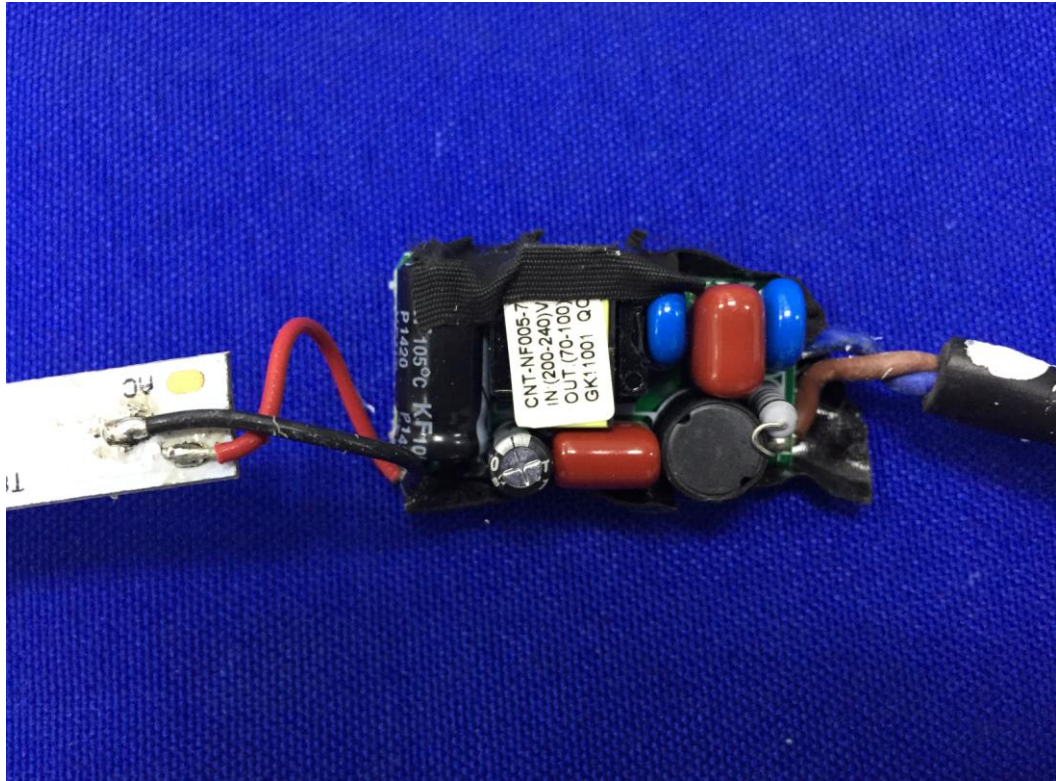


Fig. 3

-----THE END OF TEST REPORT-----